

Pathways Together

PROGRAMME

A cross-disciplinary, third-level programme for people with an intellectual disability

Pathways Together Programme

According to the Health Research Board (2020), there are nearly 23,000 people in Ireland with an intellectual disability, yet less than 1% have a third-level qualification and only 5.2% of those over 18 years of age are in paid employment.

The number of children with an intellectual disability attending mainstream primary and secondary schools is increasing, but there are limited meaningful post-secondary opportunities for this cohort of students.

Pathways Together, a new proposed programme from Technological University Dublin, supported by Convene, will provide a third-level qualification and university experience for people with an intellectual disability that includes the opportunity to apply for internships with a view to possible permanent employment in the future.

PROGRAMME AIMS

- To provide **high-quality education** for post-school leavers with an intellectual disability (ID).
- To help people with ID reach their **full potential** like everyone else.
- To equip students with **independent living** skills.
- To enable people with ID to become more **confident**.
- To provide skills and knowledge to prepare people with ID to become **meaningfully employed**.
- To increase **representation** and facilitate **full participation and integration** of people with ID within Higher Education, society and the workforce.
- To enable people with ID to experience both the academic and non-academic side of college life.

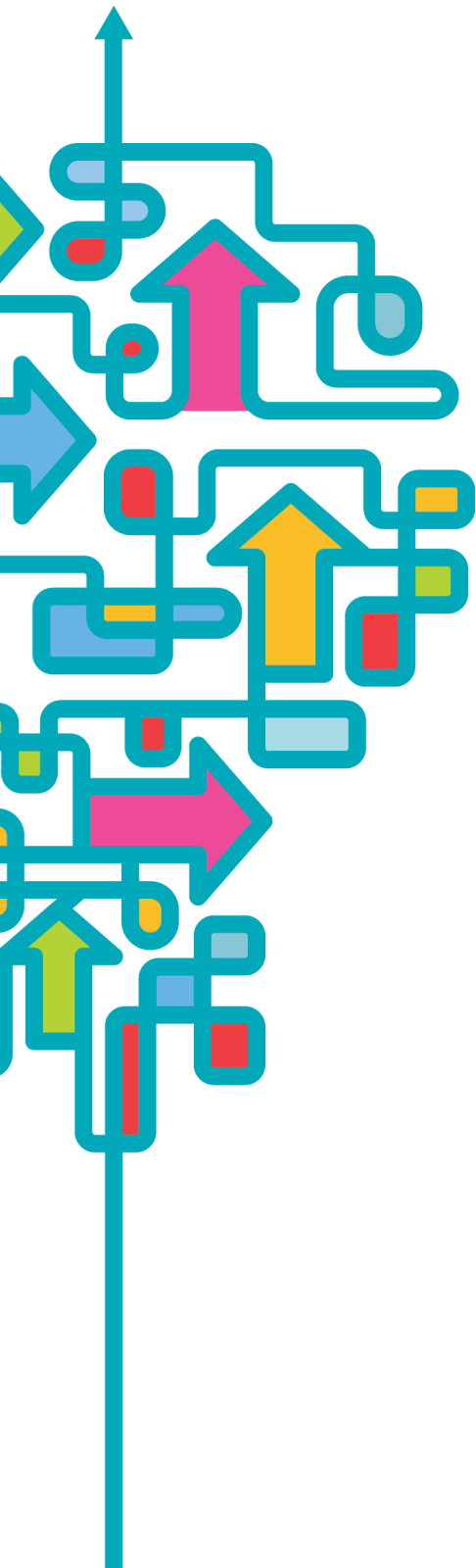
Benefits for Enterprise

Participation in this programme has mutual benefits for both enterprise and TU Dublin. TU Dublin can provide qualified graduates to help enterprise increase and widen the diversity of its workforce, while enterprise can help support the development and sustainability of this programme in TU Dublin.

Additional benefits for enterprise include:

- **Recognition as an exemplar in Equity, Diversity, Inclusion and Belonging (EDIB)** helps enterprise to:
 - Attract and retain talent and clients.
 - Achieve in-house goals and strategic objectives.
- **Recognition for contributing to positive societal change** and improving the lives of individuals with intellectual disability, their families and the wider community.
 - Helping to normalise diverse learners within society and the workplace - by seeing ability not disability.
 - Promotion of your company's ethos and values via association/collaboration with the University.
 - Community engagement and outreach.

Programme Details



It is envisaged that a pilot programme will launch on TU Dublin's Tallaght campus in September 2023, with the first class of students expected to graduate in May 2025.

- NFQ level 5, 2 year, full-time 3rd level programme for people with an intellectual disability.
- Multi-disciplinary programme with modules in a range of topic areas.
- Combination of integrated modules (in which students enrolled on the programme participate in class with students on other programmes) and stand-alone modules designed specifically for the programme.
- Indicative modules include STEM, culinary arts, social science, sports, health and nutrition, creative arts.
- In-house occupational therapy supports.
- Opportunities for internships or work placements on graduation.

Ways to Support and Get Involved

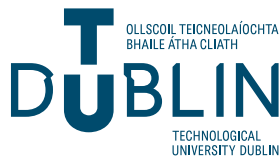
We are actively seeking the support of enterprises, corporations, businesses, government bodies, and charities with an interest in Equity, Diversity, Inclusion, and Belonging (EDIB) and Corporate Social Responsibility (CSR) to collaborate on this programme.

There are many ways enterprise can help TU Dublin to develop and sustain the programme.

- Help fund resources:
 - Staff (Occupational Therapist, Progression Co-ordinator, Lecturers).
 - Library books, IT equipment for students.
 - Educational needs assessment.
- Provide student and graduate opportunities
 - Placements, internships, employment.
- Support a continuing professional development (CPD) programme on 'Understanding disability'.
- Sponsor a student scholarship.
- Sponsor registration fees.
- Consult on programme design (Co-create).

CONTACT

If you are interested in collaborating or would like to learn more about the programme, please reach out to Sylvia Healy at **sylvia.healy@tudublin.ie** or **+353 1 2207998**
LinkedIn: [linkedin.com/in/sylvia-healy-4993836a](https://www.linkedin.com/in/sylvia-healy-4993836a)



TECHNOLOGICAL UNIVERSITY DUBLIN (TU DUBLIN)

Established in January 2019, TU Dublin is Ireland's first and largest Technological University following the merger of the Dublin Institute of Technology, and the Institutes of Technology in Tallaght and Blanchardstown. TU Dublin's strategic plan was created with the three pillars of People, Planet, and Partnerships with the United Nations' Sustainable Development Goal #4 'Quality Education for All' as its driving force. Our vision is to 'Create a Better World Together' by engaging stakeholders - students, staff, enterprise, communities, and government - and working collaboratively for the benefit of society.

www.tudublin.ie

CONVENE



Convène brings together Ireland's two largest universities, TU Dublin and University College Dublin, to explore how universities and enterprise can work more closely together to meet emerging and future skills needs. Funded by the Human Capital Initiative, through Convène, TU Dublin and the UCD Innovation Academy are leading new ventures of university-enterprise engagement within their own institutions and working together to trial new models of collaboration between universities. We communicate our learnings nationally and internationally in a shared commitment to improving higher education for all.

www.convene.ie