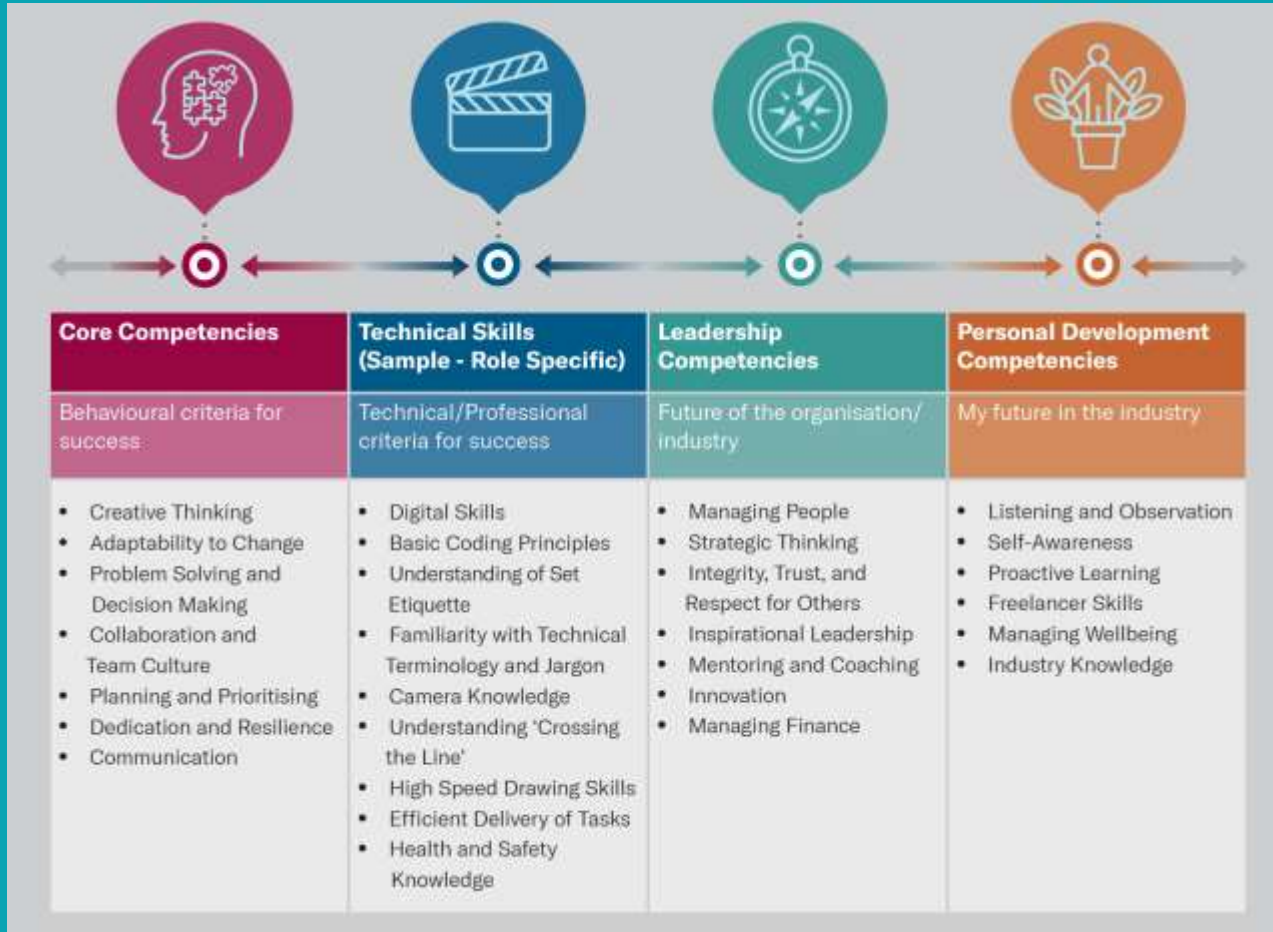


Working with Screen Ireland to develop authentic learning outcomes for work-based learning

Screen Ireland/ Screen Guilds of Ireland Competency Framework



Core	1. Creative Thinking
Description	Thinking about a situation, problem, or work requirement in a new and fresh way. Using different perspectives to generate new ideas and creative ways to address work challenges.
New Entrant	<ul style="list-style-type: none"> ✓ You see challenges and requirements from a new perspective to come up with a new idea or way of doing things.
Foundation Trainee	<ul style="list-style-type: none"> ✓ You see challenges and requirements from a new perspective to come up with a new idea or way of doing things.
Experienced	<ul style="list-style-type: none"> ✓ You coach others in creative techniques. ✓ You create an environment where creative thinking is welcomed when appropriate to generate a better-quality result. ✓ You welcome and publicly value the creative thinking of others.
Expert	<ul style="list-style-type: none"> ✓ You use your role and industry experience to think around a work problem or situation to create new options on how these might be addressed. ✓ You have the ability to come up with alternatives that are relevant to the situation and are valued by others. ✓ You can evaluate your new ideas and the ideas of others to ensure that new thinking leads to high standard results.
Leadership HOD	<ul style="list-style-type: none"> ✓ You carefully assess the risks and sensitivities in making certain decisions and discuss these with appropriate people while respecting confidentiality requirements. ✓ You demonstrate the ability to solve complex problems creatively, creating effective and innovative solutions. ✓ You identify potential obstacles or barriers that may impede/prevent a particular solution or course of action and you take the appropriate steps to overcome/address these. ✓ Where possible, you generate new insights and a range of workable solutions to understanding such situations. ✓ You encourage others to think creatively about the work challenges that they face.

Validating existing/developing new programmes with Screen Ireland

- PASSPORT TO PRODUCTION
- Level 6 Cert for new entrants to Screen Industries
- Set etiquette, basic know-how
- PROFESSIONAL PRODUCTION PRACTICE
- Level 7 Cert for those with one-years experience in Screen Industries
- Department-specific competencies



On Completion of this module, the learner will be able to

1	<p>Critically assess leadership and creativity in the context of the dynamic working environment on a high-end film and tv production. Formulate effective solutions for problem solving bringing your leadership skills into play to support your department.</p>
2	<p>Demonstrate and analyse the documentation production to wrap , critically explore the vari such as copyright and clearances, visa requir hours. Graduates will have the ability to draft industry best practice approach.</p>
3	<p>Demonstrate a critical comprehension of the , problem-solving skills in the context of produc comprehend and support the logical requirem</p>
4	<p>Illustrate a critical knowledge to the applicatio workflow strategy in the context of a film and</p>

On Completion of this module, the learner will be able to

1	<p>Critically assess leadership and creativity in the context of the dynamic working environment on a high-end film and tv production. Formulate effective solutions for problem solving <u>demonstrating</u> leadership skills to support <u>the</u> department.</p>
2	<p><u>Prepare, draft</u> and <u>evaluate</u> the documentation <u>required</u> across the production pipeline from pre-production to wrap , critically explore the variables that can impact departmentally on the production such as copyright and clearances, visa requirements , health and safety regulations and working hours. <u>Liaise with relevant specialists in the creation of specialist production</u> documentation.</p>
3	<p>Demonstrate a critical comprehension of production workflow <u>and</u> logistics, <u>and demonstrate</u> advanced problem-solving skills in the context of production processes..</p>
4	<p><u>Develop</u> a workflow strategy in the context of a film and tv production <u>demonstrating</u> best <u>practice</u> approach <u>to file management systems</u></p>

Shared language

Baskets/Handbags/Party Bag

What are learning outcomes?

They are the things you take home from the party.

We talk about "what's in your bag?" after the module





On Completion of this module, the learner will be able to

1	<p>Critically assess leadership and creativity in the context of the dynamic working environment on a high-end film and tv production. Formulate effective solutions for problem solving bringing your leadership skills into play to support your department.</p>
2	<p>Demonstrate and analyse the documentation production to wrap , critically explore the variables such as copyright and clearances, visa requirements hours. Graduates will have the ability to draft industry best practice approach.</p>
3	<p>Demonstrate a critical comprehension of the problem-solving skills in the context of production comprehend and support the logical requirements</p>
4	<p>Illustrate a critical knowledge to the application workflow strategy in the context of a film and tv production</p>

On Completion of this module, the learner will be able to

1	<p>Critically assess leadership and creativity in the context of the dynamic working environment on a high-end film and tv production. Formulate effective solutions for problem solving <u>demonstrating</u> leadership skills to support <u>the</u> department.</p>
2	<p><u>Prepare, draft</u> and <u>evaluate</u> the documentation <u>required</u> across the production pipeline from pre-production to wrap , critically explore the variables that can impact departmentally on the production such as copyright and clearances, visa requirements , health and safety regulations and working hours. <u>Liaise with relevant specialists in the creation of specialist production</u> documentation.</p>
3	<p>Demonstrate a critical comprehension of production workflow <u>and</u> logistics, <u>and demonstrate</u> advanced problem-solving skills in the context of production processes.</p>
4	<p><u>Develop</u> a workflow strategy in the context of a film and tv production <u>demonstrating</u> best <u>practice</u> approach <u>to file management systems</u></p>

Learning Outcome 2

- Demonstrate and analyse the documentation requirements across the production pipeline from pre-production to wrap, critically explore the variables that can impact departmentally on the production such as copyright and clearances, visa requirements, health and safety regulations and working hours. Graduates will have the ability to draft necessary industry specific documentation following industry best practice approach.
- Prepare, draft and evaluate the documentation required across the production pipeline from pre-production to wrap, critically explore the variables that can impact departmentally on the production such as copyright and clearances, visa requirements, health and safety regulations and working hours. Liaise with relevant specialists in the creation of specialist production documentation.

Learning Outcome 2

- **Demonstrate and analyse** the documentation requirements across the production pipeline from pre-production to wrap, critically explore the variables that can impact departmentally on the production such as copyright and clearances, visa requirements , health and safety regulations and working hours. Graduates will **have the ability to draft necessary industry specific** documentation following industry best practice approach.
- **Prepare, draft and evaluate** the documentation required across the production pipeline from pre-production to wrap, critically explore the variables that can impact departmentally on the production such as copyright and clearances, visa requirements , health and safety regulations and working hours. **Liaise with relevant specialists** in the creation of specialist production documentation.

Shared language: sharing strengths

Specific and Measurable

What is to be learned?

How we will we assess that?

I.e. What's in your handbag? How do we know?

