

External Wall Construction:
Cedral lapped profile horizontal weatherboard, ventilated air gap between battens, Tyvel breather membrane lapped and taped at joints on 180mm Rockwool Duo rainscreen insulation fixed to 160mm KLH CLT structural wall panel all fitted manufacturer's details and instructions

Ground Floor Construction:
Selected carpet tiles adhered to 65mm screed with optional underfloor heating with separation VCL membrane on 100mm XPS SL Xtratherm insulation on reinforced concrete groundbearing slab thickened at perimeter Monarflex RMB400 radon barrier/DPM and on min. 200mm XPS SL5 Xtratherm insulation on 50mm sand blinding on site hardcore all to structural engineer's details. Radon sump, pipe and vent all to future detail.

External Wall Construction:
Cedral lapped profile horizontal weatherboard, ventilated air gap between battens, Tyvel breather membrane lapped and taped at joints on 180mm Rockwool Duo rainscreen insulation fixed to 160mm KLH CLT structural wall panel all fitted manufacturer's details and instructions
Atrium Structure:
300 x 300mm Glulam timber column with 300 x 400mm Glulam timber rafter connected all to engineer's details

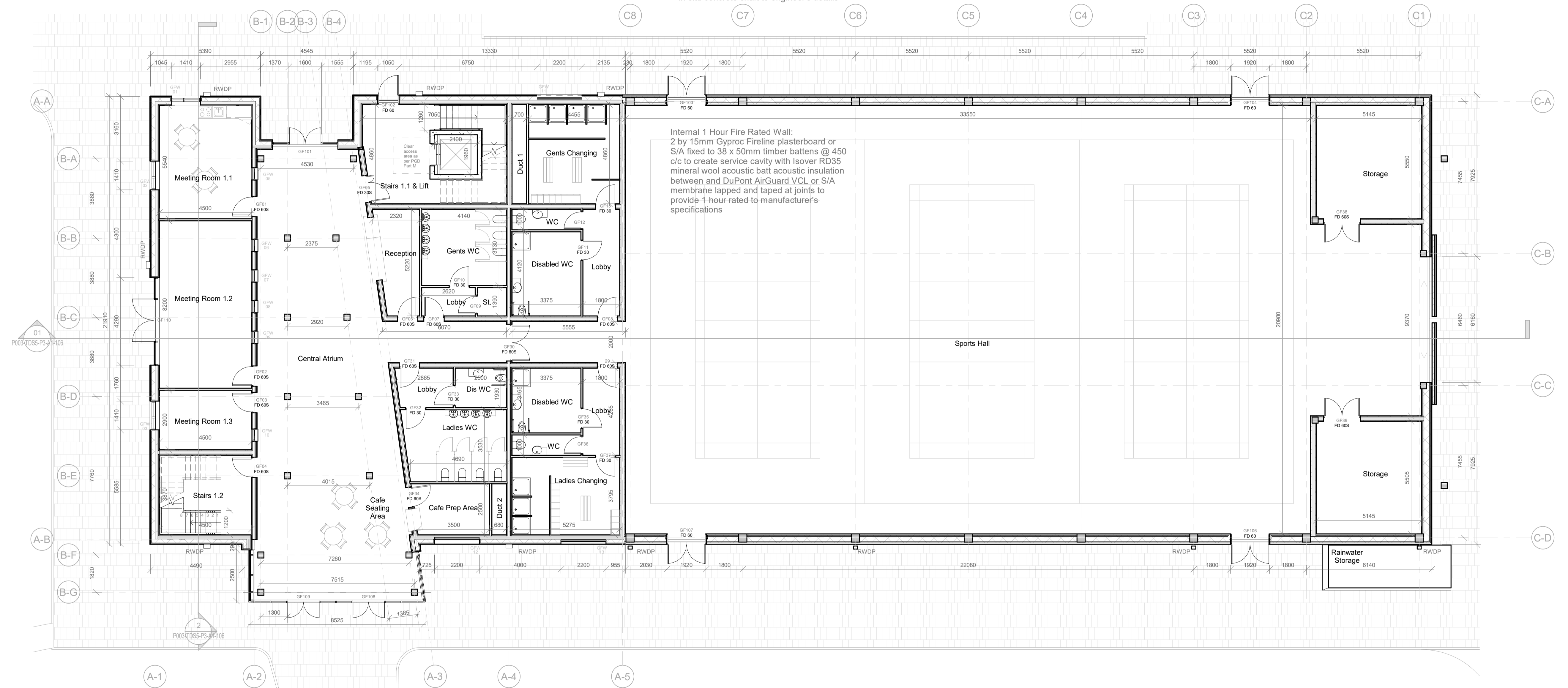
Fire Rated Stairs 1.1:
Prefabricated concrete stairs and landing with 200mm wrist depth 150mm riser, 300mm going by Quinn Building Products or S/A installed by manufacturer to engineer's details.
100mm dia HRS (hollow round section) mild steel handrails on 25mm dia round bar ballustrades @ 100mm max c/c all powder coated to RAL ref. 1003 (safety yellow) protected for installation. All in accordance with TGD part M
Lift:
Otis Gen 2 Stream lift or S/A to accommodate 8-10 persons in in-situ concrete shaft to engineer's details

External Wall Construction:
Aquapanel Render System with finishing coat in selected colour on cement board, ventilated gap with 50mm Gutex mineral wall slab, SIP Energy loadbearing insulated wall panels with 15mm OSB/3 inner and outer layer and 230mm XPS insulation with 45 x 230mm treated timber sole plate all to manufacturer's details

Large Hall Door:
Timber framed insulated large double sliding doors with Cedral Weatherboard external finish on rollers incorporate into base of frame and powdercoated mild steel guide rail above fixed back to structural posts to structural engineer's details.

External Pergola:
300 x 300mm treated Glulam timber column with 200 x 400mm Glulam timber rafter connected all to engineer's details

Internal 1 Hour Fire Rated Wall:
2 by 15mm Gyproc Fireline plasterboard or S/A fixed to 38 x 50mm timber battens @ 450 c/c to create service cavity with Isover RD35 mineral wool acoustic batt acoustic insulation between and DuPont AirGuard VCL or S/A membrane lapped and taped at joints to provide 1 hour rated to manufacturer's specifications



Fire Rated Stairs 1.2:
Prefabricated concrete stairs and landing with 200mm wrist depth 150mm riser, 250mm going by Quinn Building Products or S/A installed by manufacturer to engineer's details. All in accordance with TGD part M

Atrium Facade:
Raynaer CW50 curtain walling system with low-E double glazing argon filled panels fitted to manufacturer's spec

Access:
Provide level access in accordance with TGD Part M at all external doors

Glazing Units:
Carlson Aluclad timber windows or S/A with double glazed panel

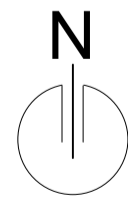
Hall Fire Doors:
Insulated steel panel and framed fire exit with push bar panic bolt and self closers, Aco drainage slot channels at all door threshold connected to surface water drainage system

Sports Hall Floor Construction:
Dynamik Komfort Elite Hardwood timber flooring or S/A with underlay membrane on OSB substrate 65mm screed with optional underfloor heating with separation VCL membrane on 100mm XPS SL Xtratherm insulation on reinforced concrete groundbearing slab thickened at perimeter Monarflex RMB400 radon barrier/DPM and on min. 200mm XPS SL5 Xtratherm insulation on 50mm sand blinding on site hardcore all to structural engineer's details. Radon sump, pipe and vent all to future detail.

External Paving:
75mm concrete paving bricks in selected colour and pattern (Tobermore Airclean VS50) incorporating Aco slot drainage channel on 50 -100mm sand bed to provide fall on waterproof membrane on graded site hardcore well compacted in layers of 300mm to structural engineer's specification

Rain Harvesting Tanks and Enclosure:
Rainwater harvesting storage tanks and system by specialist storage within steel framed enclosure with access door and timber cladding to be agreed.

01 0 Ground Floor Plan 1 : 100



Project	CLONGRIFFIN COMMUNITY CENTRE, MAIN STREET, CLONGRIFFIN, Co. DUBLIN
Title	GROUND FLOOR PLAN

Drawn by	Aidan McKenna
Project number	DT175-3-TECH 3100
Date	December 2020
Checked by	TDS Staff



Revisions	Description	Date

Submitted to	DT175 - 3
Sheet no.	P003-TDS5-P3-A1-101
Scale	1 : 100

External Wall Construction:
Cedral lapped profile horizontal weatherboard, ventilated air gap between battens, Tyvel breather membrane lapped and taped at joints on 180mm Rockwool Duo rainscreen insulation fixed to 160mm KLH CLT structural wall panel all fitted manufacturer's details and instructions

First Floor Construction:
Selected carpet tiles adhered to 65mm screed with optional underfloor heating with separation VCL membrane on KHL CLT floor panel or S/A fitted to manufacturer's details
Atrium Walkway Handrailing System:
100mm dia Oak timber handrail fixed to continuous horizontal metal plate, stainless steel fin shades ballustrades @ max 100mm c/c on continuous metal stiffening angle with metal channel fixed to cantilevered CLT to later details and specialist's specification

External Wall Construction:
Cedral lapped profile horizontal weatherboard, ventilated air gap between battens, Tyvel breather membrane lapped and taped at joints on 180mm Rockwool Duo rainscreen insulation fixed to 160mm KLH CLT structural wall panel all fitted manufacturer's details and instructions

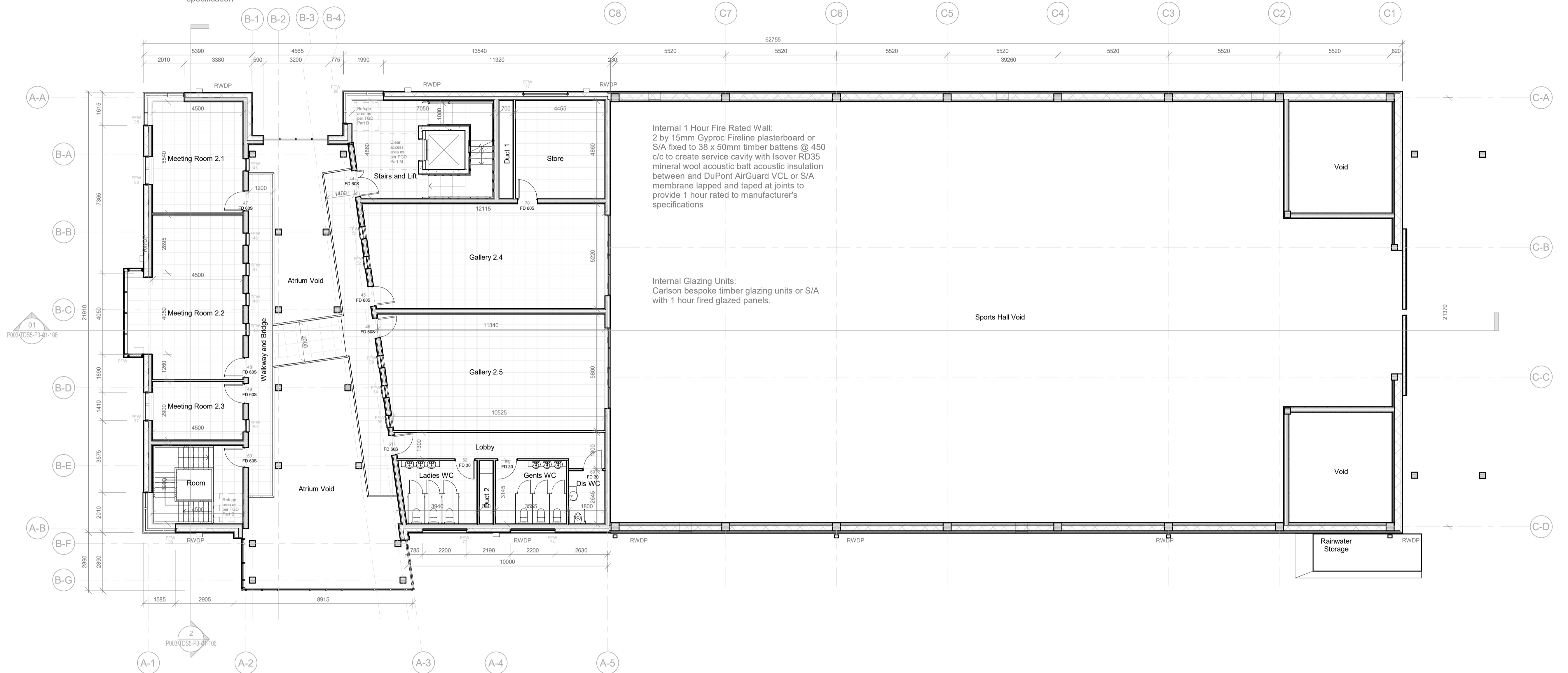
Atrium Structure:
300 x 300mm Glulam timber column with 300 x 400mm Glulam timber rafter connected all to engineer's details

Fire Rated Stairs:
Prefabricated concrete stairs and landing with 200mm wrist depth 150mm riser, 250mm going Quinn Building Products or S/A installed by manufacturer to engineer's details. 100mm dia HRS (hollow round section) mild steel handrails on 25mm dia round bar ballustrades @ 100mm max c/c all powder coated to RAL ref. 1003 (safety yellow) protected for installation. All in accordance with TGD part M

Lift:
Otis Gen 2 Stream lift or S/A to accommodate 8-10 persons in in-situ concrete shaft to engineer's details

External Pergola:
300 x 300mm treated Glulam timber column with 200 x 400mm Glulam timber rafter connected all to engineer's details

Large Hall Door:
Timber framed insulated large double sliding doors with Cedral Weatherboard external finish on rollers incorporate into base of frame and powdercoated mild steel guide rail above fixed back to structural posts to structural engineer's details.



Internal 1 Hour Fire Rated Wall:
2 by 15mm Gyproc Fireline plasterboard or S/A fixed to 38 x 50mm timber battens @ 450 c/c to create service cavity with Isover RD35 mineral wool acoustic batt acoustic insulation between and DuPont AirGuard VCL or S/A membrane lapped and taped at joints to provide 1 hour rated to manufacturer's specifications

Internal Glazing Units:
Carlson bespoke timber glazing units or S/A with 1 hour fired glazed panels.

West Elevation Bay Window:
Wictec 50SG curtain walling system with thermally broken aluminum internal profile and 23mm external silicone joint. Low-E double glazed panels and Wicline 90SG all glass integrated open section to north and south face. U-Value 1.4Wm²/K

Atrium Facade:
Raynaer CW50 curtain walling system with low-E double glazing argon filled panels fitted to manufacturer's specification. U-Value 1.5Wm²/K

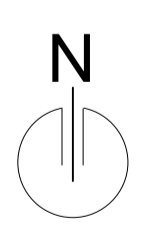
Glazing Units:
Carlson Aluclad timber windows or S/A with double glazed panel. U-Value 1.5Wm²/K

Sports Hall Structure:
300 x 1000mm twin roof beams Connected to 400 x 400mm Glulam timber columns all to structural engineer's details

Upper Wall Construction:
Selected Inpek In-Rock panel screwed to aluminium subframe with 50mm min. ventilation gap, ventilated gap with 50mm Gutex mineral wall slab, SIP Energy loadbearing insulated wall panels with 15mm OSB/3 inner and outer layer and 230mm XPS insulation with 45 x 230mm treated timber sole plate all to manufacturer's details

Rain Harvesting Tanks and Enclosure:
Rainwater harvesting storage tanks and system by specialist storage within steel framed enclosure with access door and timber cladding to be agreed.

01 01 First Floor Plan
1 : 100



Project
CLONGRIFFIN COMMUNITY CENTRE, MAIN STREET, CLONGRIFFIN, Co. DUBLIN

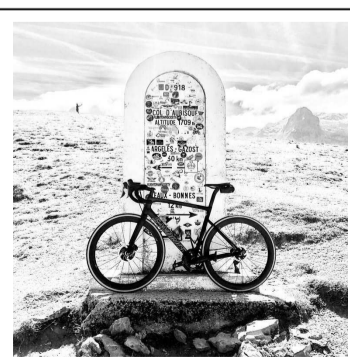
Title
FIRST FLOOR PLAN

Drawn by
Aidan McKenna

Project number
DT175-3-TECH 3100

Date
December 2020

Checked by
TDS Staff



Revisions	Description	Date

Submitted to
DT175 - 3

Sheet no.
P003-TDS5-P3-A1-102

Scale
1 : 100

External Wall Construction:
Cedral lapped profile horizontal weatherboard, ventilated air gap between battens, Tyvel breather membrane lapped and taped at joints on 180mm Rockwool Duo rainscreen insulation fixed to 160mm KLH CLT structural wall panel all fitted manufacturer's details and instructions

Pressed metal parapet capping and fixing bracket with powdercoat finish to selected colour

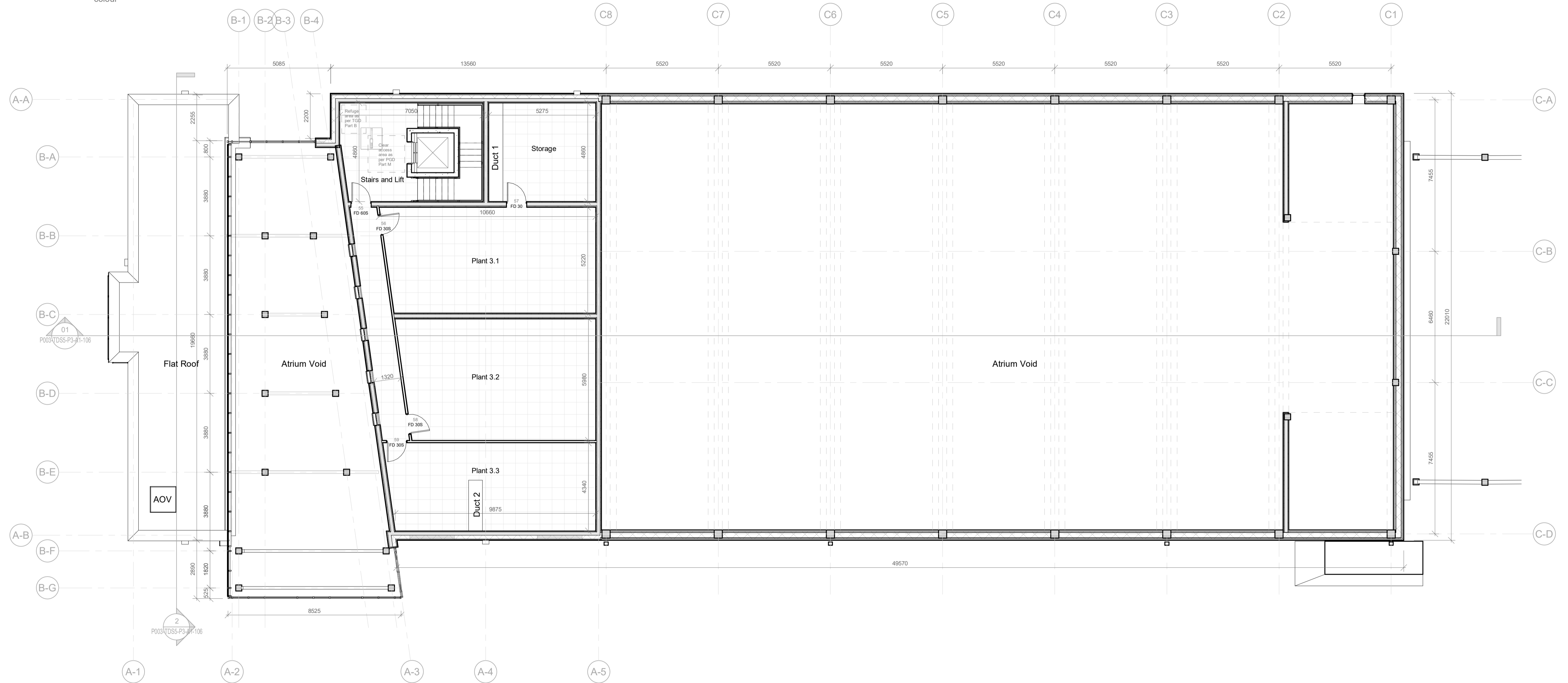
Second Floor Construction:
Selected non-slip linoleum safety floor adhered to 65mm screed with optional underfloor heating with separation VCL membrane on KHL CLT floor panel or S/A fitted to manufacturer's details

External Wall Construction:
Cedral lapped profile horizontal weatherboard, ventilated air gap between battens, Tyvel breather membrane lapped and taped at joints on 180mm Rockwool Duo rainscreen insulation fixed to 160mm KLH CLT structural wall panel all fitted manufacturer's details and instructions

Lift:
Otis Gen 2 Stream lift or S/A to accommodate 8-10 persons in in-situ concrete shaft to engineer's details

Fire Rated Stairs:
Prefabricated concrete stairs and landing with 200mm wrist depth 150mm riser, 250mm going Quinn Building Products or S/A installed by manufacturer to engineer's details.
100mm dia HRS (hollow round section) mild steel handrails on 25mm dia round bar ballustrades @ 100mm max c/c all powder coated to RAL ref. 1003 (safety yellow) protected for installation. All in accordance with TGD part M

Internal 1 Hour Fire Rated Wall:
2 by 15mm Gyproc Fireline plasterboard or S/A fixed to 38 x 50mm timber battens @ 450 c/c to create service cavity with Isover RD35 mineral wool acoustic batt acoustic insulation between and DuPont AirGuard VCL or S/A membrane lapped and taped at joints to provide 1 hour rated to manufacturer's specifications



01 02 Second Floor Level
1 : 100

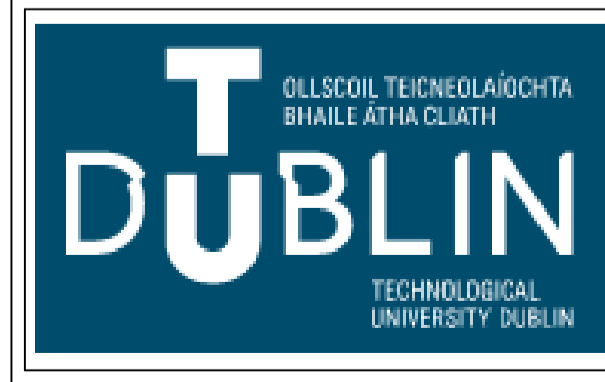
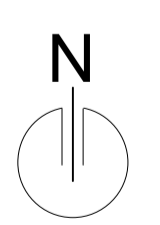
Flat Roof Build-up:
Bauder Thermofoil flat roof bitumen capping sheet adhered to reinforced PVC underlay membrane dressed up and under proprietary curtain wall glazing cill parapet drip. Kingspan TT47 tapered PIR insulation laid to 1:60 drainage fall minimum thickness 160mm

Atrium Facade:
Raynaer CW50 curtain walling system with low-E double glazing argon filled panels fitted to manufacturer's specification. U-Value 1.5Wm²/K

Atrium Structure:
300 x 300mm Glulam timber column with 300 x 400mm Glulam timber rafter connected all to engineer's details

Upper Wall Construction:
Selected Inpek In-Rock panel screwed to aluminium subframe with 50mm min. ventilation gap, ventilated gap with 50mm Gutex mineral wall slab. SIP Energy loadbearing insulated wall panels with 15mm OSB/3 inner and outer layer and 230mm XPS insulation with 45 x 230mm treated timber sole plate all to manufacturer's details

Sports Hall Structure:
300 x 1000mm twin roof beams Connected to 400 x 400mm Glulam timber columns all to structural engineer's details



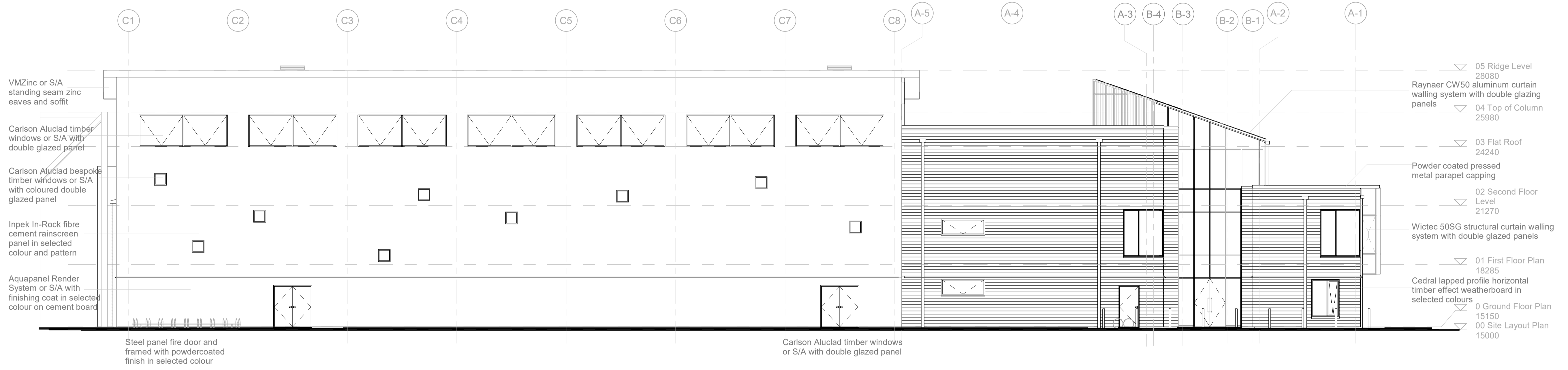
Project	CLONGRIFFIN COMMUNITY CENTRE, MAIN STREET, CLONGRIFFIN, Co. DUBLIN
Title	SECOND FLOOR PLAN

Drawn by	Aidan McKenna
Project number	DT175-3-TECH 3100
Date	December 2020
Checked by	TDS Staff

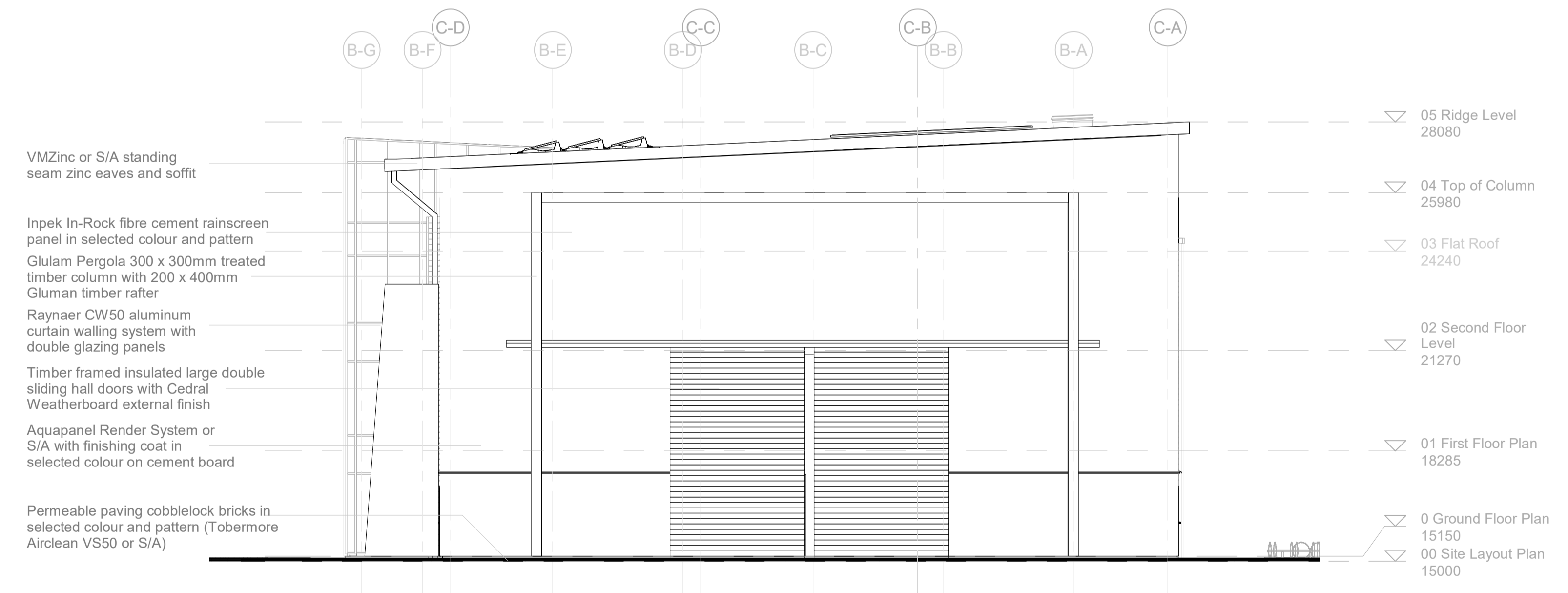


Revisions	Description	Date

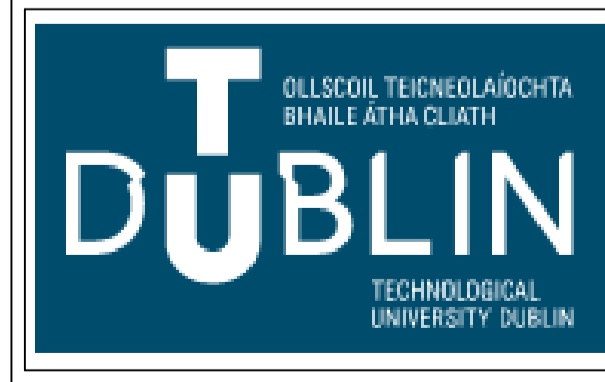
Submitted to	DT175 - 3
Sheet no.	P003-TDS5-P3-A1-103
Scale	1 : 100



01 North Elevation
1 : 100



02 East Elevation
1 : 100



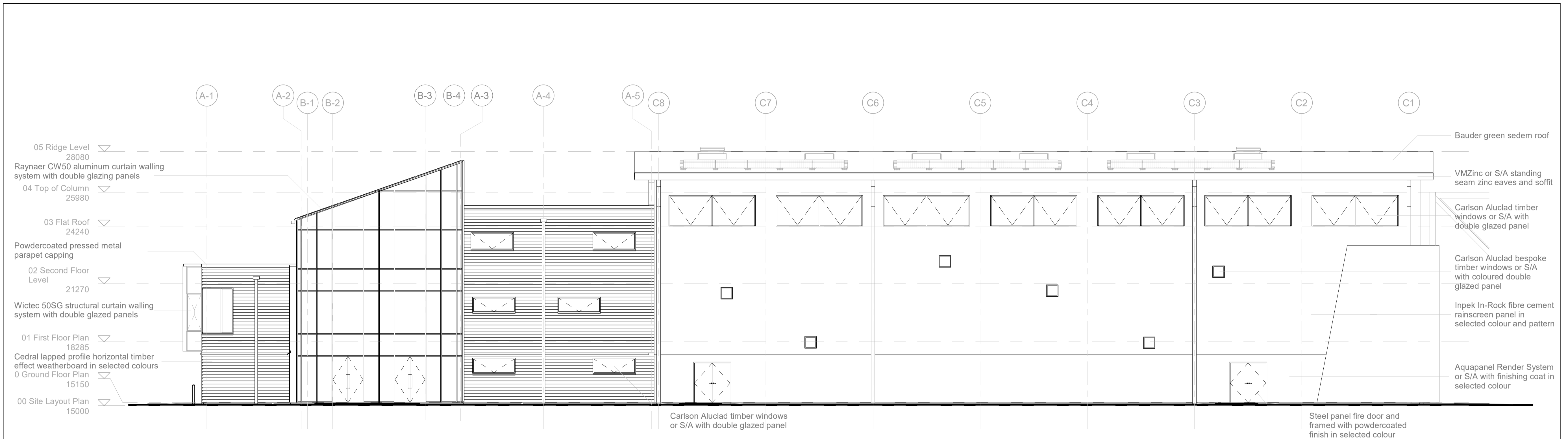
Project	CLONGRIFIN COMMUNITY CENTRE, MAIN STREET, CLONGRIFIN, Co. DUBLIN
Title	NORTH & EAST ELEVATIONS

Drawn by	Aidan McKenna
Project number	DT175-3-TECH 3100
Date	December 2020
Checked by	TDS Staff

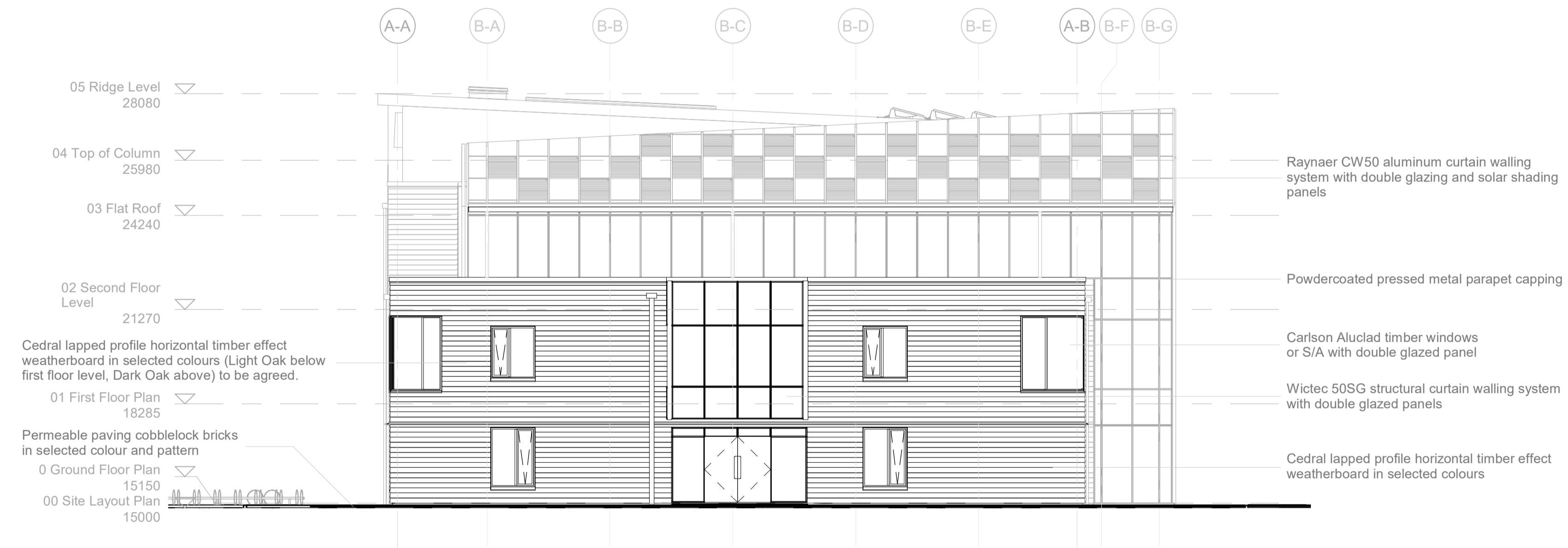


Revisions	Description	Date

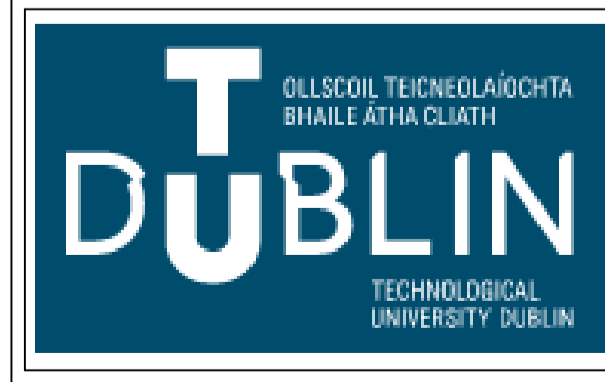
Submitted to	DT175 - 3
Sheet no.	P003-TDS5-P3-A1-104
Scale	1 : 100



1 South Elevation
1 : 100

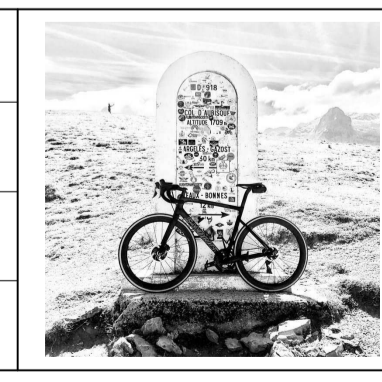


2 West Elevation
1 : 100



Project	CLONGRIFIN COMMUNITY CENTRE, MAIN STREET, CLONGRIFIN, Co. DUBLIN
Title	SOUTH & WEST ELEVATIONS

Drawn by	Aidan McKenna
Project number	DT175-3-TECH 3100
Date	December 2020
Checked by	TDS Staff



Revisions	Description	Date

Submitted to	DT175 - 3
Sheet no.	P003-TDS5-P3-A1-105
Scale	1 : 100

Glazing Units:
Carlson Aluclad timber windows or S/A with double glazed panel.
U-Value 1.5Wm²/K

Atrium Facade:
Raynaer CW50 curtain walling system with low-E double glazing argon filled panels fitted to manufacturer's specification.
U-Value 1.5Wm²/K

Flat Roof Build-up:
Bauder Thermofoil flat roof bitumen capping sheet adhered to reinforced PVC underlay membrane dressed up and under proprietary curtain wall glazing cill parapet drip. Kingspan TT47 tapered PIR insulation laid to 1:60 drainage fall minimum thickness 160mm with separation VCL membrane on KHL CLT floor panel or S/A

First & Second Floor Construction:
Selected carpet tiles adhered to 65mm screed with optional underfloor heating with separation VCL membrane on KHL CLT floor panel or S/A fitted to manufacturer's details

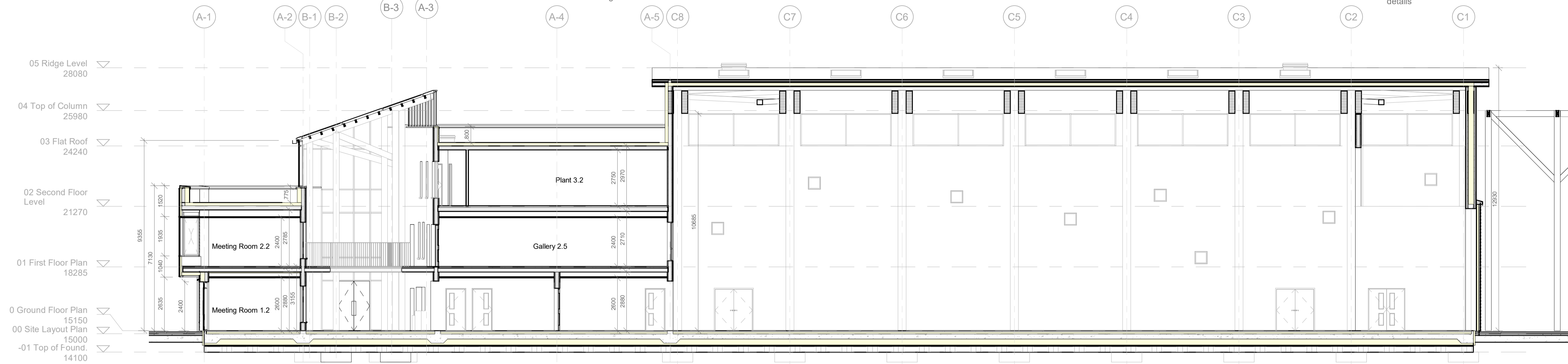
Sports Hall Structure:
200 x 120mm Glulam timber purlin on fitted to 1100x300mm Glulam structural beam all to structural engineer's details

Internal 1 Hour Fire Rated Wall:
2 by 15mm Gyproc Fireline plasterboard or S/A fixed to 38 x 50mm timber battens @ 450 c/c to create service cavity with Isover RD35 mineral wool acoustic batt acoustic insulation between and DuPont AirGuard VCL or S/A membrane lapped and taped at joints to provide 1 hour rated to manufacturer's specifications

Sports Hall Green Roof:
Bauder Extensive Green Roof System or S/A comprising of 25mm Xero-Flo-XF118 vegetation layer, 80mm extensive substrate, filter fleece polypropylene membrane, 40mm DSE40 drainage layer, root protection layer, PE-Foil slip layer, moisture barrier, 160mm XPS insulation, vapour control layer all to manufacturer's specification

Sports Hall Eaves and Soffit:
VMZinc or S/A standing seam zinc on vent mesh with hidden fixing by specialist with marine ply substrate for clad fixing. Ensure adequate air-gap and through ventilation. Provide insect mesh at air gaps.

External Pergola:
300 x 300mm treated Glulam timber column with 200 x 400mm Glulam timber rafter connected all to engineer's details



01 Section A-A
1 : 100

External Paving:
75mm concrete paving bricks in selected colour and pattern (Tobermore Airclean VS50) incorporating Aco slot drainage channel on 50 -100mm sand bed to provide fall on waterproof membrane on graded site hardcore well compacted in layers of 300mm to structural engineer's specification

External Wall Construction:
Cedral lapped profile horizontal weatherboard, ventilated air gap between battens, Tyvel breather membrane lapped and taped at joints on 180mm Rockwool Duo rainscreen insulation fixed to 160mm KHL CLT structural wall panel all fitted manufacturer's details and instructions

Ground Floor Construction:
Selected carpet tiles adhered to 65mm screed with optional underfloor heating with separation VCL membrane on 100mm XPS SL Xtratherm insulation on reinforced concrete groundbearing slab thickened at perimeter Monarflex RMB400 radon barrier/DPM and on min 200mm XPS SL5 Xtratherm insulation on 50mm sand blinding on site hardcore all to structural engineer's details. Radon sump, pipe and vent all to future detail.

Sports Hall Floor Construction:
Dynamik Komfort Elite Hardwood timber flooring or S/A with underlay membrane on OSB substrate 65mm screed with optional underfloor heating with separation VCL membrane on 100mm XPS SL Xtratherm insulation on reinforced concrete groundbearing slab thickened at perimeter Monarflex RMB400 radon barrier/DPM and on min 200mm XPS SL5 Xtratherm insulation on 50mm sand blinding on site hardcore all to structural engineer's details. Radon sump, pipe and vent all to future detail.

External Wall Construction:
Aquapanel Render System with finishing coat in selected colour on cement board, ventilated gap with 50mm Gutex mineral wall slab, SIP Energy loadbearing insulated wall panels with 15mm OSB/3 inner and outer layer and 230mm XPS insulation with 45 x 230mm treated timber sole plate all to manufacturer's details

Large Hall Door:
Timber framed insulated large double sliding doors with Cedral Weatherboard external finish on rollers incorporate into base of frame and powdercoated mild steel guide rail above fixed back to structural posts to structural engineer's details.

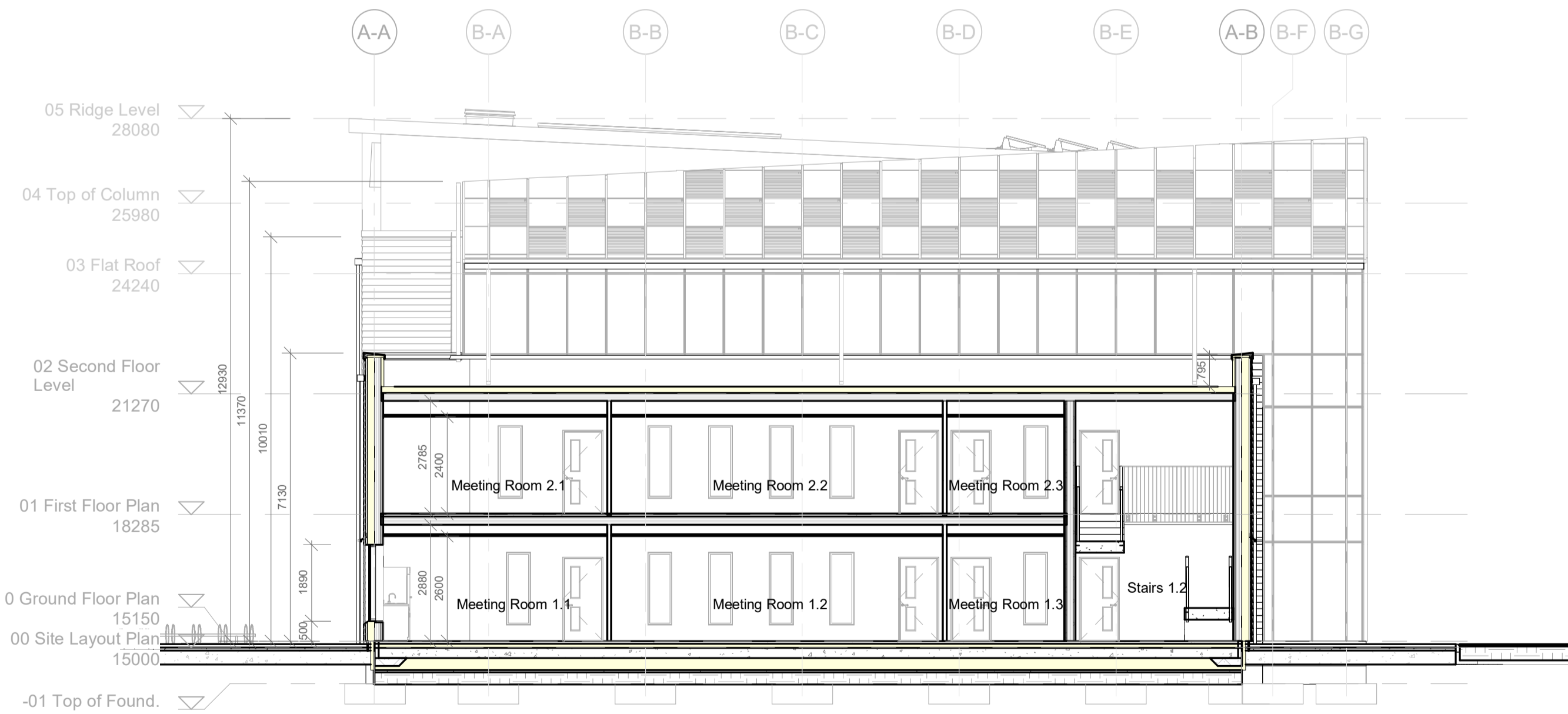
Flat Roof Build-up:
Bauder Thermofoil flat roof bitumen capping sheet adhered to reinforced PVC underlay membrane dressed up and under proprietary curtain wall glazing cill parapet drip. Kingspan TT47 tapered PIR insulation laid to 1:60 drainage fall minimum thickness 160mm with separation VCL membrane on KHL CLT floor panel or S/A

First Floor Construction:
Selected carpet tiles adhered to 65mm screed with optional underfloor heating with separation VCL membrane on KHL CLT floor panel or S/A fitted to manufacturer's details

External Wall Construction:
Cedral lapped profile horizontal weatherboard, ventilated air gap between battens, Tyvel breather membrane lapped and taped at joints on 180mm Rockwool Duo rainscreen insulation fixed to 160mm KHL CLT structural wall panel all fitted manufacturer's details and instructions

Glazing Units:
Carlson Aluclad timber windows or S/A with double glazed panel. U-Value 1.5Wm²/K

External Paving:
75mm concrete paving bricks in selected colour and pattern (Tobermore Airclean VS50) incorporating Aco slot drainage channel on 50 -100mm sand bed to provide fall on waterproof membrane on graded site hardcore well compacted in layers of 300mm to structural engineer's specification



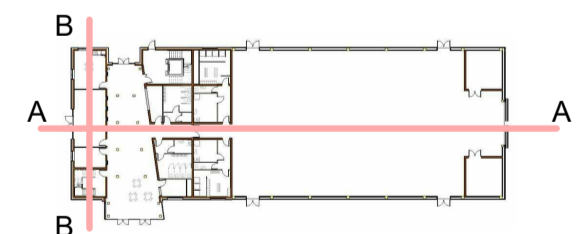
2 Section B-B
1 : 100

Atrium Facade:
Raynaer CW50 curtain walling system with low-E double glazing argon filled panels fitted to manufacturer's specification. U-Value 1.5Wm²/K

Internal 1 Hour Fire Rated Wall:
2 by 15mm Gyproc Fireline plasterboard or S/A fixed to 38 x 50mm timber battens @ 450 c/c to create service cavity with Isover RD35 mineral wool acoustic batt acoustic insulation between and DuPont AirGuard VCL or S/A membrane lapped and taped at joints to provide 1 hour rated to manufacturer's specifications

Fire Rated Stairs 1.2:
Prefabricated concrete stairs and landing with 200mm wrist depth 150mm riser, 250mm going by Quinn Building Products or S/A installed by manufacturer to engineer's details. All in accordance with TGD part M

Ground Floor Construction:
Selected carpet tiles adhered to 65mm screed with optional underfloor heating with separation VCL membrane on 100mm XPS SL Xtratherm insulation on reinforced concrete groundbearing slab thickened at perimeter Monarflex RMB400 radon barrier/DPM and on min 200mm XPS SL5 Xtratherm insulation on 50mm sand blinding on site hardcore all to structural engineer's details. Radon sump, pipe and vent all to future detail.

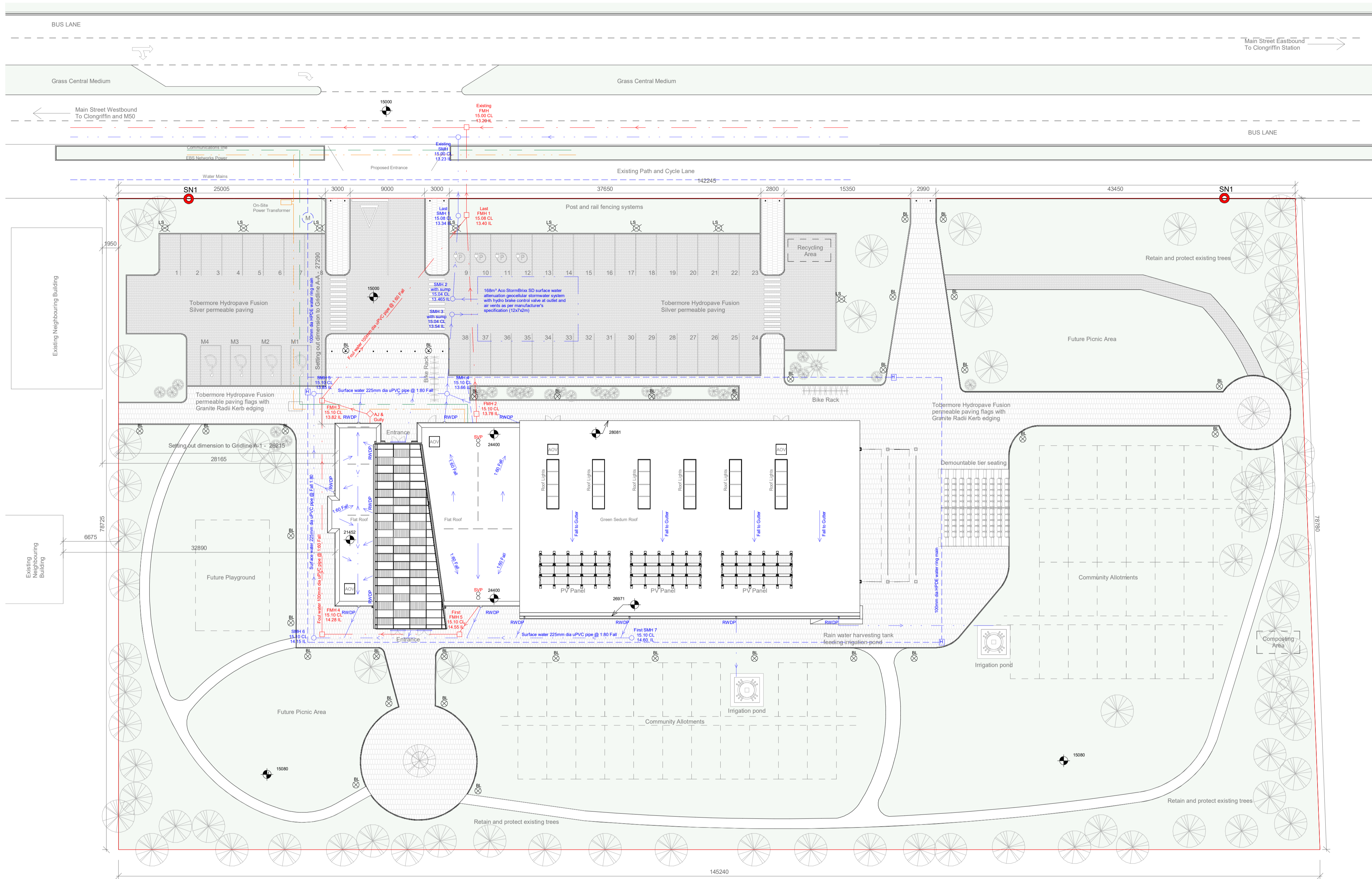


Project	CLONGRIFFIN COMMUNITY CENTRE, MAIN STREET, CLONGRIFFIN, Co. DUBLIN
Title	SECTIONS A-A & B-B

Drawn by	Aidan McKenna
Project number	DT175-3-TECH 3100
Date	December 2020
Checked by	TDS Staff



Revisions	Description	Date	Submitted to
			DT175 - 3
			Sheet no. P003-TDS5-P3-A1-106
			Scale 1 : 100



- SITE PLAN LEGEND:**
- APPLICATION SITE OUTLINE: —
 - FOUL WATER DRAINAGE: - - -
 - SURFACE WATER DRAINAGE: - - -
 - COVER LEVEL: CL
 - INVERT LEVEL: IL
 - SPOT LEVEL DATUM: Level
 - MANHOLE 600x600mm: SMH FMH
 - SURFACE WATER DRAINAGE CHANNEL: —
 - COMMUNICATIONS: —
 - MAINS WATER: - - -
 - MAINS POWER: - - -

NOTES:
 ALL UTILITY AND SERVICE CONNECTIONS TO ONLY BE MADE WITH THE AUTHORIZATION AND APPROVAL OF THE SERVICE PROVIDER AND LOCAL AUTHORITY. LOCAL AUTHORITY ROAD OPENING LICENCES TO BE OBTAIN PRIOR TO COMMENCEMENT OF CONNECTION WORKS.

LAMP STANDARD / BOLLARD LAMP: LS BL

HYDRANT / METER: H M

PLANNING SIGN NOTICE
SN1

Tobermore Hydropave Fusion permeable paving flags 600x300x80mm Graphite with Granite Radii Kerb edging 780x125x25mm

Tobermore Hydropave Fusion permeable paving 200x100x80mm Silver

168m³ Aco StormBrixx SD geocellular surface water attenuation system with hydro brake control valve at outlet and air vents as per manufacturer's specification (12m x7m x 2m deep) to comply with Local Authority SuDS strategy

Retain and Protect existing trees. Trees to be surveyed and examined prior to site work commencement. Specialist landscaping plans to late details.

4no. 22kW DC fast charging points for EV car charging with Mennekes and CCS outlets

Sedum Extension Green Roof Area:
 Finish growing surface on WB vegetation matting on 100mm Extensive/Biodiverse substrate layer on filtration fleece membrane on water storage/drainage layer (Bauder DSE20) to fall to boundary edges on polyester/polypropylene fibre protective layer

Photovoltaic modules on Bauder aluminum mounting stand to an angle of 35 degrees South or as specified by manufacturer

Flat Roof Build-up:
 Bauder Thermoflo flat roof bitumen capping sheet adhered to reinforced PVC underlay membrane dressed up and under proprietary curtain wall glazing cill parapet drip. Kingspan TT47 tapered PIR insulation laid to 1:60 drainage fall minimum thickness 160mm with separation VCL membrane on KHL CLT floor panel or S/A.

Atrium Facade:
 Raynaer CW50 curtain walling system with low-E double glazing argon filled panels fitted to manufacturer's specification.

Sports Hall Green Roof:
 Bauder Extensive Green Roof System or S/A comprising of 25mm Xero-Flex-XF118 vegetation layer, 80mm extensive substrate, filter fleece polypropylene membrane, 40mm DSE40 drainage layer, root protection layer, PE-Foil slip layer, moisture barrier, 160mm XPS insulation, vapour control layer all to manufacturer's specification.

Car Park Surface:
 Footpaths at entrance and at disabled parking bay to have dropped curbs with tactile paving with a max of 5mm profile and a min width of 1m. All paths should be ramped perpendicular to the road with a recommended gradient of 1:20 and not exceeding 1:12 as per TGD Part M. Surface to meet TGD Part B 2006 Section 5.2 for Fire Vehicle Access.

Disabled Parking:
 Provision to be made for disabled parking at 5% min as per TGD Part M 2010 Section 1.1 Dig. 8 & 9.

SuDS:
 Size and capacity of Attenuation System as per engineers specifications and in accordance with IS EN 752:2017, BRE Digest 365 and TGD Part H 2010 Section 1.6. Oil Interceptor to be installed in accordance with IS EN 858-2:2003.

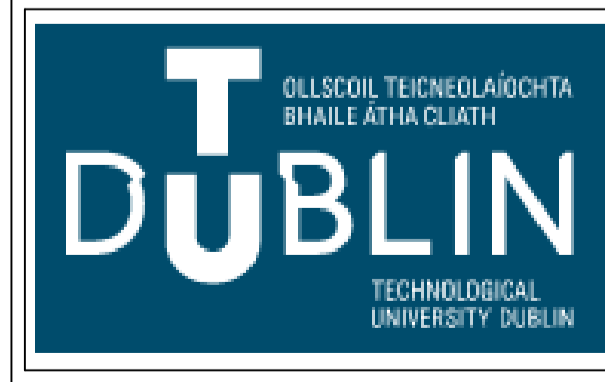
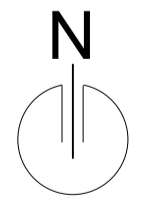
01 00 Site Layout Plan
1 : 250

SURFACE WATER DRAINAGE:
 Surface water 225mm dia uPVC pipe @ 1:80 Fall

Location	Distance	Fall 1:80	IL (Invert Level)	CL (Cover Level)
Exist Surface Manhole	9.0m	0.11m	13.23m	15.00m
SMH 1 Last Manhole	10.0m	0.12m	13.34m	15.08m
SMH 2 with sump	5.0m	0.09m	13.46m	15.04m
SMH 3 with sump	9.0m	0.11m	13.54m	15.04m
SMH 4	15.5m	0.19m	13.66m	15.10m
SMH 5	29.0m	0.36m	13.85m	15.10m
SMH 6	37.0m	0.46m	14.15m	15.10m
SMH 7 First Manhole	First Manhole	First Manhole	14.60m	15.10m

FOUL WATER DRAINAGE:
 Foul water 100mm dia uPVC pipe @ 1:60 Fall

Location	Distance	Fall 1:60	IL (Invert Level)	CL (Cover Level)
Exist Foul Manhole	9.0m	0.11m	13.20m	15.00m
FMH 1 Last Manhole	23.0m	0.38m	13.40m	15.08m
FMH 2	27.0m	0.45m	13.78m	15.10m
FMH 3	28.0m	0.46m	13.82m	15.10m
FMH 4	16.0m	0.27m	14.28m	15.10m
FMH 5 First Manhole	First Manhole	First Manhole	14.55m	15.10m



Project
CLONGRIFFIN COMMUNITY CENTRE, MAIN STREET, CLONGRIFFIN, Co. DUBLIN

Title
SITE LAYOUT PLAN

Drawn by
 Aidan McKenna

Project number
 DT175-3-TECH 3100

Date
 December 2020

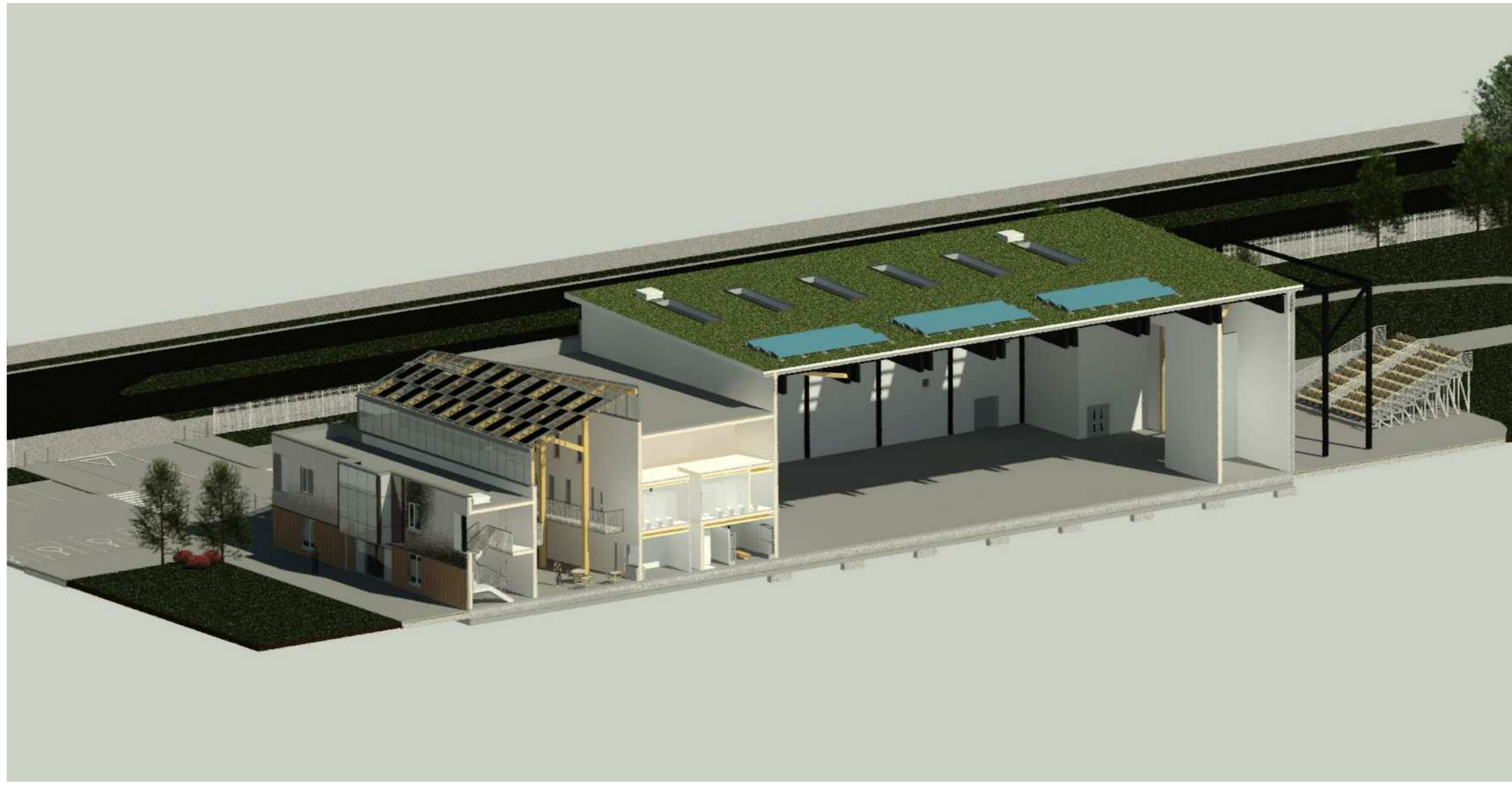
Checked by
 TDS Staff



Revisions	Description

Date	Submitted to
	DT175 - 3
	Sheet no. P003-TDS5-P3-A1-107
	Scale As indicated

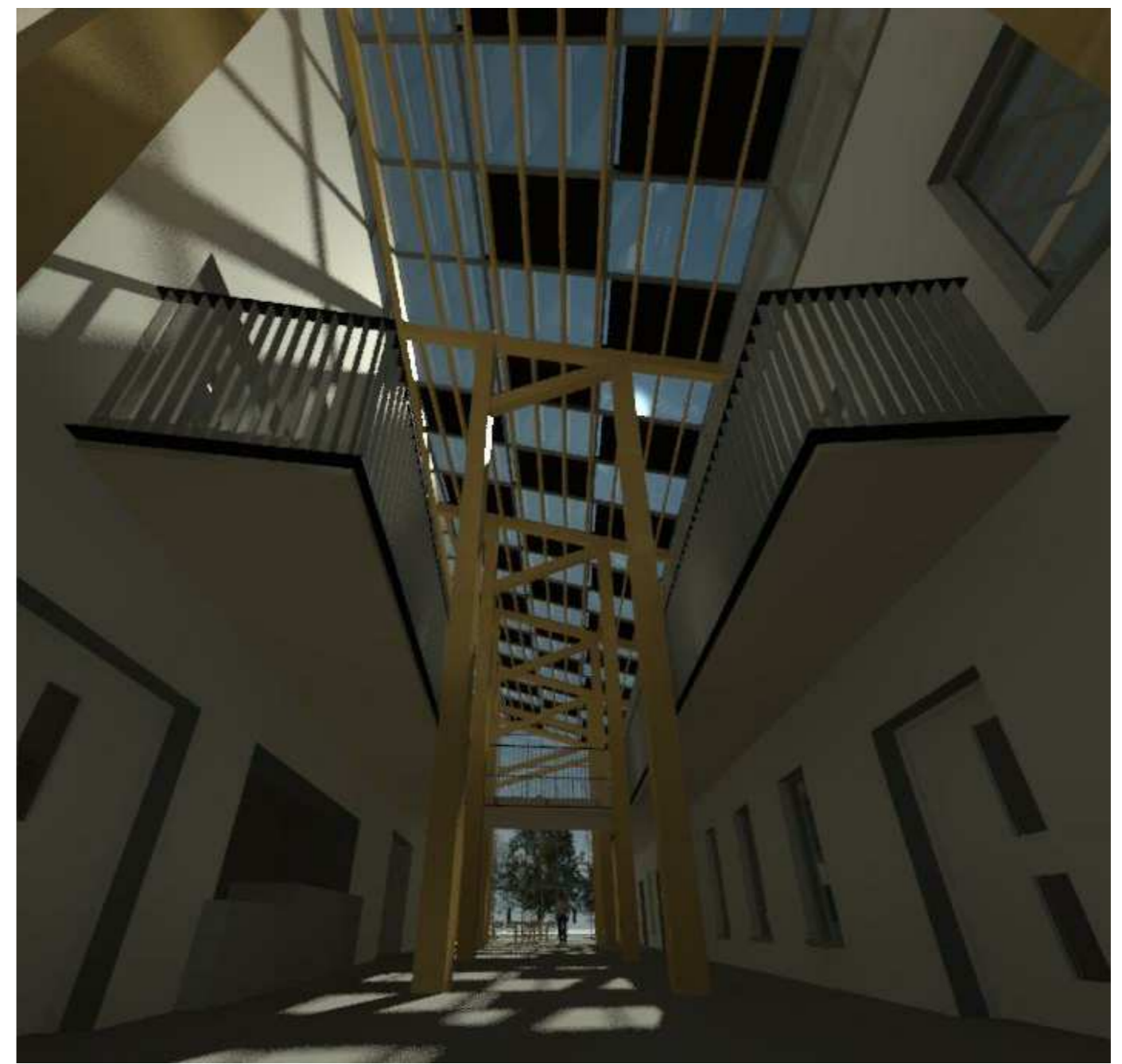
Revisions	Description	Date



01 3D Cut Section A-A
1 : 1



02 North Elevation Evening
1 : 1



03 Atrium Interior from North Entrance
1 : 1



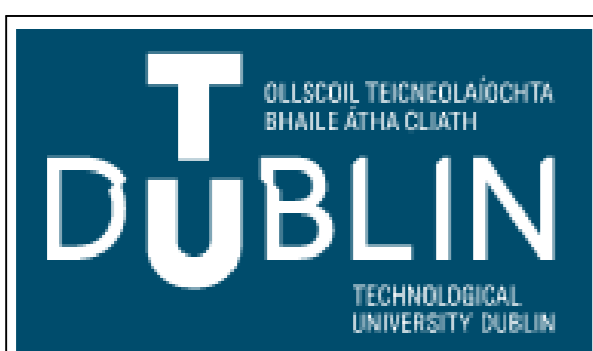
04 South West Corner
1 : 1



06 South Atrium Render
1 : 1



05 South Elevation
1 : 1



Project	CLONGRIFFIN COMMUNITY CENTRE, MAIN STREET, CLONGRIFFIN, Co. DUBLIN
Title	Visualisation

Drawn by	Aidan McKenna
Project number	DT175-3-TECH 3100
Date	December 2020
Checked by	TDS Staff



Submitted to	DT175 - 3
Sheet no.	P003-TDS5-P3-A1-120
Scale	1 : 1