

**REVISED SUBMISSION**

- A Insulation added behind spandrel panel 16-12-20
- B Fire stopping added 16-12-20
- C Additional CW tolerance 16-12-20

Raynaer CW50 curtain walling system with low-E double glazing argon filled panels fitted to manufacturer's spec

Raynaer proprietary splayed insulated corner junction and suspended gutter with strengthening bracket. Connections and fitting back to atrium structure to specialist details

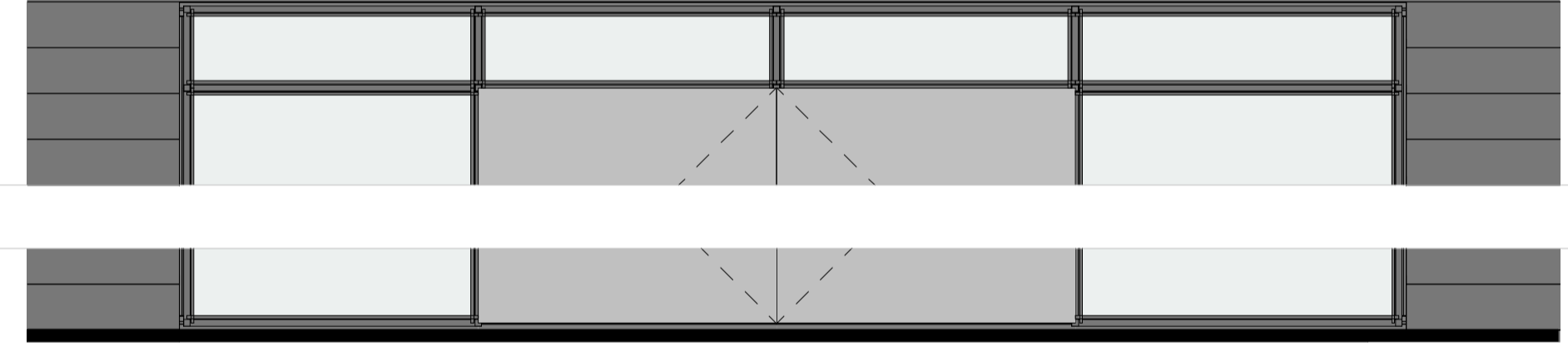
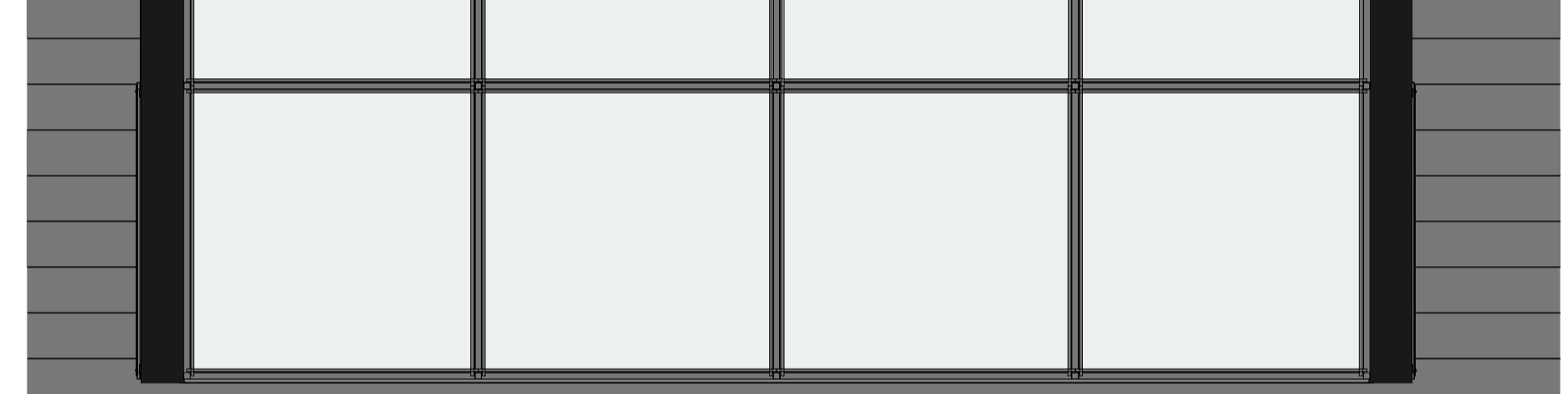
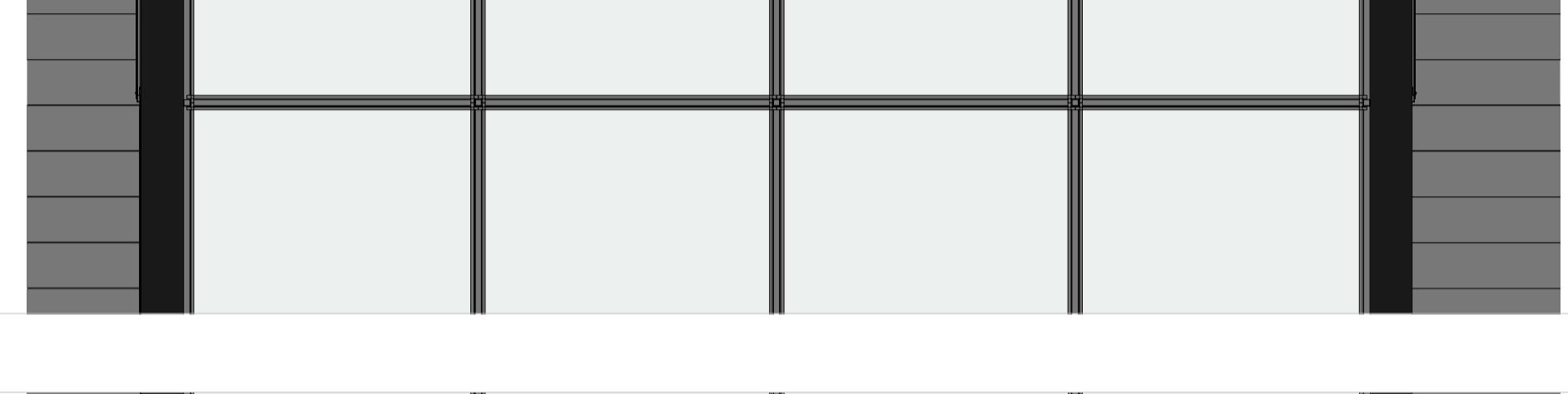
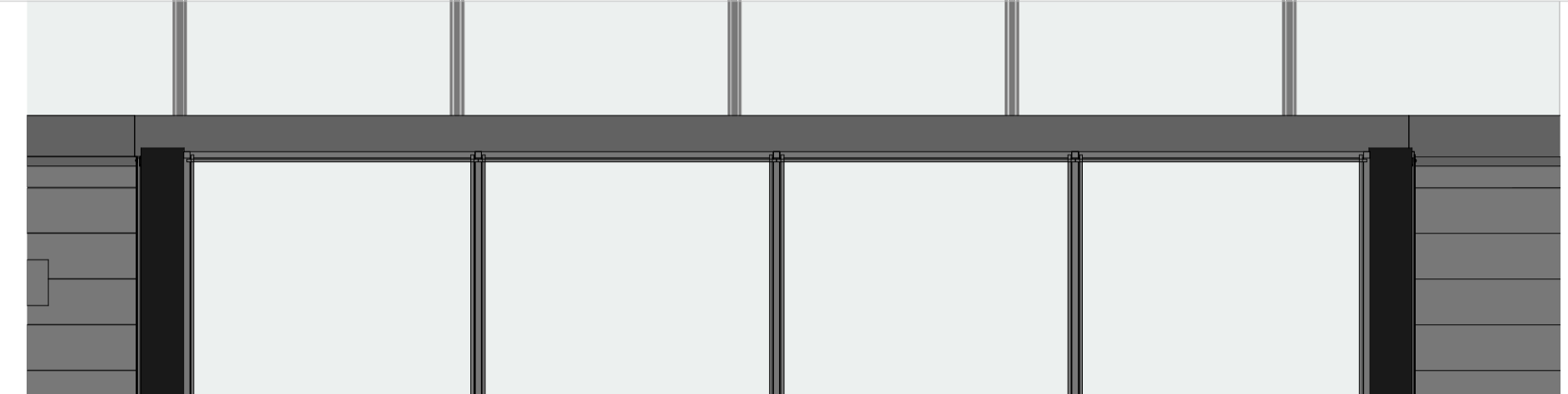
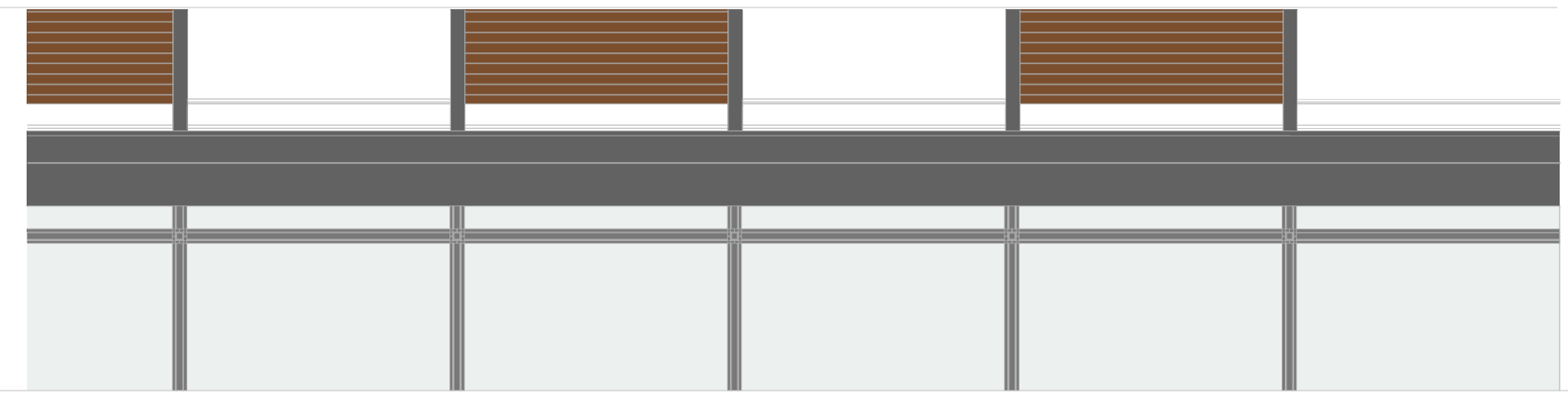
Pressed metal parapet capping and fixing bracket with powdercoat finish to selected colour fixed to treated timber substrate to DPC layer

Bauder Thermofoil flat roof bitumen capping sheet adhered to reinforced PVC underlay membrane dressed up and under proprietary curtain wall glazing cill parapet drip. Kingspan TT47 tapered PIR insulation laid to 1:60 drainage fall minimum thickness 160mm

Flat Roof U-Value = 0.12 W/m²K

300 x 300mm Glulam timber column with 300 x 400mm Glulam timber rafter connected using "Resin" hidden bolting system all to structural engineer's details

Raynaers CW50 curtain walling system with double glazing and solar shade spandrel panels to later detail



Insulated spandrel non-vision spandrel panel with double glazed external finish and aluminum back panel

Rockwool SP Firestop OSB intumescent strip

Wictec 50SG curtain walling system with thermally broken aluminum internal profile and 23mm external silicone joint. Low-E double glazed panels and Wicline 90SG all glass integrated open section to north and south face. U-Value 1.4Wm²/K

Selected Armstrong acoustic suspended ceiling tiles and framing system hung from KLH CLT structural floor with 50mm Isovar mineral wool fixed to soffit

2 by 15mm Gyproc plasterboard fixed to 38 x 50mm timber battens @ 450 c/c to create service cavity with DuPont AirGuard VCL membrane lapped and taped at joints to provide 1 hour rated

Wictec 50SG structural glazing system with Low-E double glazed panels. U-Value 1.4Wm²/K

FD60S Oak finished certified fire door with vision panel and matching frame incorporating intumescent strip, smoke seal and acoustic seal as specified

First Floor Level

Rockwool SP Firestop OSB intumescent strip

Cedral lapped profile horizontal weatherboard strips screwed back to 38 x 50mm treated timber battens at 600mm c/c with EPDM strip to face of batten all to manufacturer's instructions

Selected carpet tiles adhered to 65mm screed with separation VCL membrane on KHL CLT floor panel

100mm dia Oak timber handrail fixed to continuous horizontal metal plate, stainless steel fin shades ballustrades @ max 100mm c/c on continuous metal stiffening angle with metal channel fixed to cantilevered CLT to later details and specialist's specification

Cedral Weatherboard planks in Dark Brown timber effect above first floor and Light Oak below first floor level

Ventilated air gap between battens, Tyvel breather membrane lapped and taped at joints on 180mm Rockwool Duo rainscreen insulation fixed to 160mm KLH CLT structural wall panel all fitted manufacturer's details and instructions

15mm Gyproc plasterboard fixed to 38 x 50mm timber battens @ 450 c/c to create service cavity with DuPont AirGuard VCL membrane lapped and taped at joints

FD60S Oak finished certified fire door with vision panel and matching frame incorporating intumescent strip, smoke seal and acoustic seal as specified

Aco drainage slot channels connected to surface water drainage system

Ground Floor Level

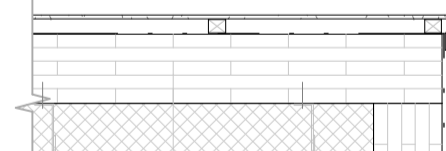
75mm concrete paving bricks in selected colour and pattern (Tobermore Airclean VS50) on 50-100mm sand bed to provide fall on waterproof membrane on graded site hardcore well compacted in layers of 300mm to structural engineer's specification

West Elevation U-Value 0.13 W/m²K

**01 West Wall Section 1 : 20**

Selected carpet tiles adhered to 65mm screed with optional underfloor heating with separation VCL membrane on 100mm XPS SL Xtratherm insulation on reinforced concrete groundbearing slab thickened at perimeter Monarflex RMB400 radon barrier/DPM and on min 200mm XPS SL5 Xtratherm insulation on 50mm sand blinding on site hardcore all to structural engineer's details. Radon sump, pipe and vent all to future detail.

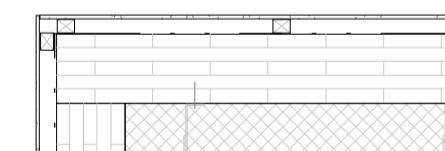
**02 West Wall Partial Elevation 1 : 20**



15mm Gyproc plasterboard fixed to 38 x 50mm timber battens @ 450 c/c to create service cavity with DuPont AirGuard VCL membrane lapped and taped at joints

Ventilated air gap between battens, Tyvel breather membrane lapped and taped at joints on 180mm Rockwool Duo rainscreen insulation fixed to 160mm KLH CLT structural wall panel all fitted manufacturer's details and instructions

Wictec 50SG curtain walling system with thermally broken aluminum internal profile and 23mm external silicone joint. Low-E double glazed panels and Wicline 90SG all glass integrated open section to north and south face. U-Value 1.4Wm²/K



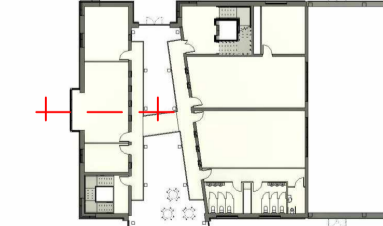
Cedral lapped profile horizontal weatherboard strips screwed back to 38 x 50mm treated timber battens at 600mm c/c with EPDM strip to face of batten all to manufacturer's instructions.

**03 West Wall Bay Window Plan 1 : 20**



Revisions

Description



Date

Submitted to

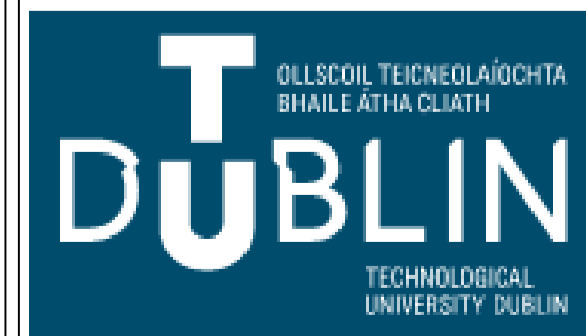
DT175 - 3

Sheet no.

P005-TDS5-P5-A1-201

Scale

1 : 20



Project

**CLONGRIFFIN COMMUNITY CENTRE, MAIN STREET, CLONGRIFFIN, Co. DUBLIN**

Drawn by

Aidan McKenna

Project number

DT175-3-TECH 3100

Date

December 2020

Checked by

TDS Staff

Title

**WEST ELEVATION WALL SECTION**

Extensive Hall Roof U-Value = 0.12 W/m<sup>2</sup>/K

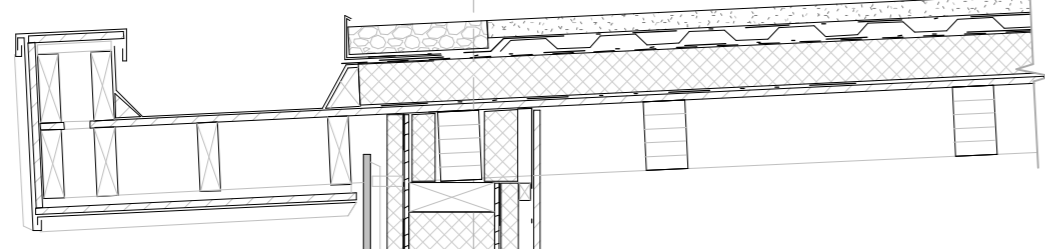
Standing seam Zinc on clad soffit and fascia laid on vent mesh with hidden zinc box gutter lining by specialist. Timber frame lattice projection with OSB substrate for clad fixing. Ensure adequate air-gap and through ventilation

Bauder Extensive Green Roof System comprising of 25mm Xero-Flor-XF118 vegetation layer, 80mm extensive substrate, filter fleece polypropylene membrane, 40mm DSE40 drainage layer, root protection layer, PE-Foil slip layer, moisture barrier, 160mm XPS insulation, vapour control layer all to manufacturer's specification

**REVISED SUBMISSION**

Extension green roof with standing seam zinc fascia and soffit

Revisions	Description	Date
A	Amendments to various notes	16-12-20
B	Amended foundation profile	16-12-20
C	Amended facade panel joint alignment	22-12-20



Rockwool PWCB cavity barrier fire stop or S/A installed to manufacturer's instructions

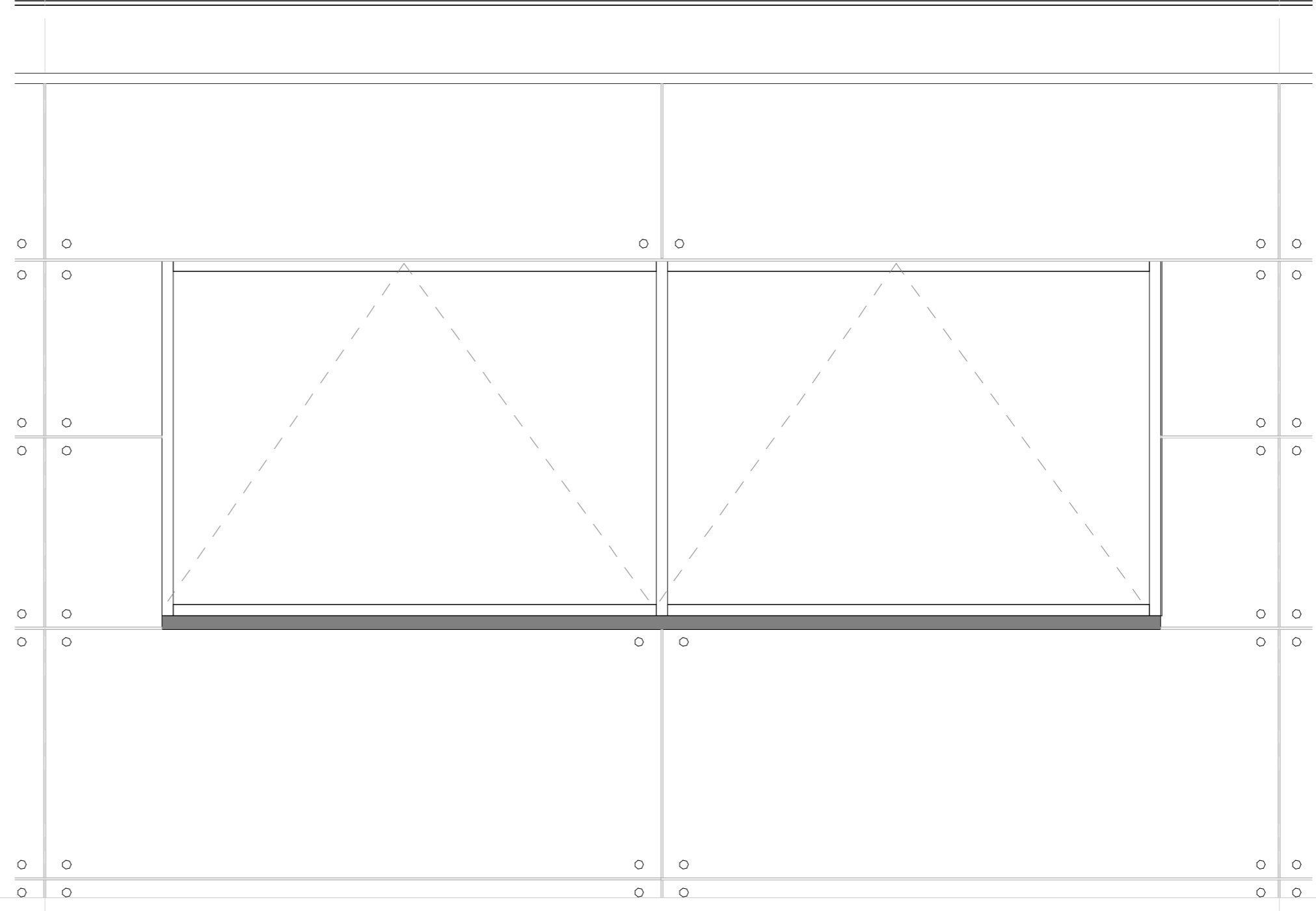
300 x 1000mm twin roof beams with 120 x 200mm Glulam timber purlins at 900mm c/c all to structural engineer's details

Carlson Aluclad double glazed windows with down hinged opening sections and automatic actuators by specialist

Carlson Aluclad double glazed windows with down hinged opening sections and automatic actuators by specialist

InPek proprietary aluminum subframe fixed to 50mm Gutex wood fibre insulation board with Tyvek breather membrane to exterior face

Dynamik engineered timber acoustic panels with perforations fitted to timber battens using Proprietary secret clipping system on black acoustic fleece over stud work. Provide 7mm spacing shadow gap between pattern. Panel layout to future details.



South Elevation U-Value = 0.08 W/m<sup>2</sup>/K

SIP Energy loadbearing insulated wall panels with 15mm OSB/3 inner and outer layer and 230mm XPS insulation with 45 x 230mm treated timber sole plate all to manufacturer's details

InPek In-Rock fibre cement rainscreen panels in selected colour and pattern screwed to aluminum subframe to 50mm ventilated air gap. Layout pattern to future details.

Proprietary pressed metal drip and insect guard

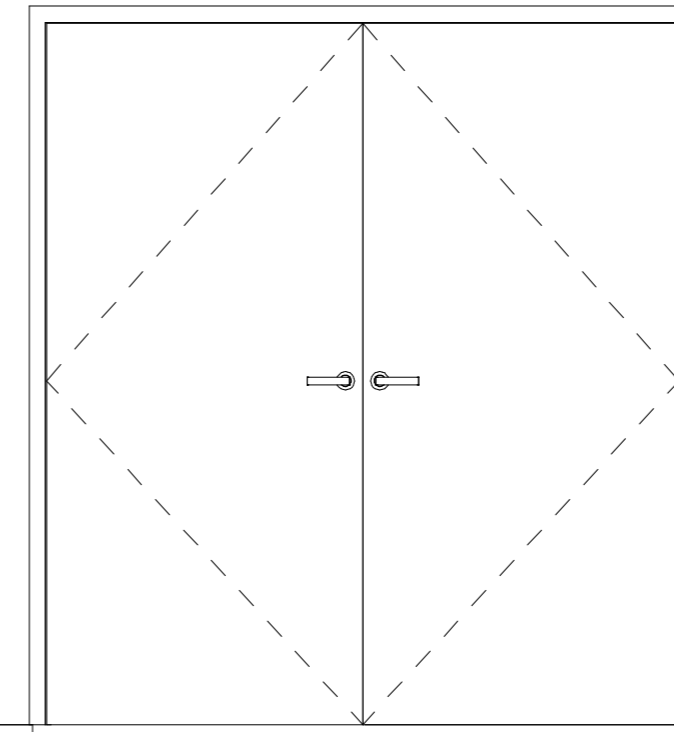
Proprietary pressed metal drip and insect guard

Aquapanel Render System with finishing coat in selected colour on cement board. 50mm ventilated gap with 50mm Gutex mineral wall slab

Aquapanel Render System with finishing coat in selected colour on cement board.

Insulated steel panel and framed fire exit with push bar panic bolt and self closers

Dynamik Komfort Elite Hardwood timber flooring with underlay membrane on OSB substrate 65mm screed with optional underfloor heating with separation VCL membrane on 100mm XPS SL Xtratherm insulation on reinforced concrete groundbearing slab thickened at perimeter Monarflex RMB400 radon barrier/DPM and on min 200mm XPS SL5 Xtratherm insulation on 50mm sand blinding on site hardcore all to structural engineer's details. Radon sump, pipe and vent all to future detail.

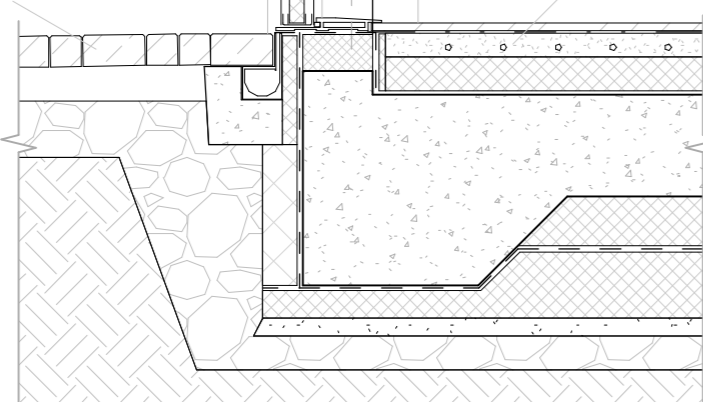


75mm concrete paving bricks in selected colour and pattern (Tobermore Airclean VS50) incorporating Aco slot drainage channel on 50 -100mm sand bed to provide fall on waterproof membrane on graded site hardcore well compacted in layers of 300mm to structural engineer's specification

Sand cement rendered plinth on bonding mesh adhered to substrate

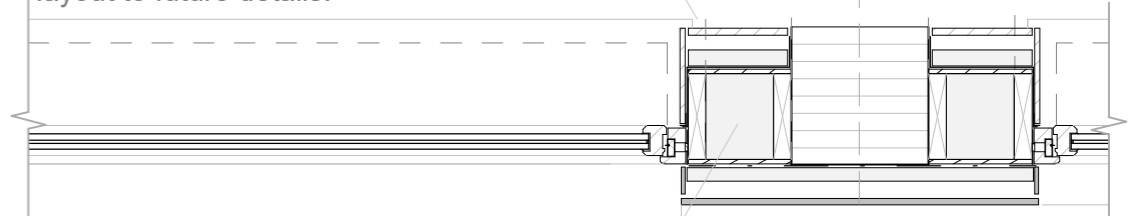
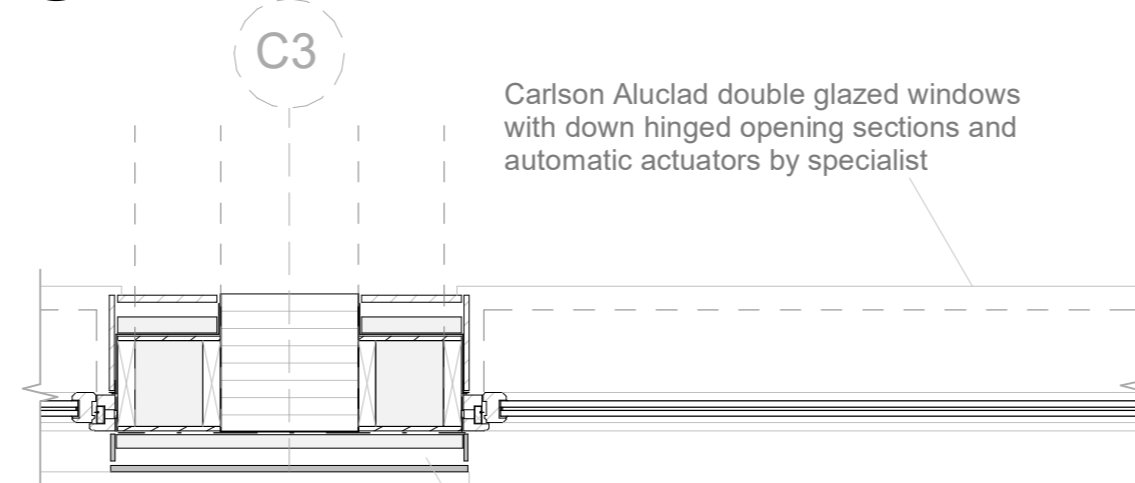
**02 South Wall Partial Elevation 1 : 20**

**01 South Wall Section with Door 1 : 20**



Carlson Aluclad double glazed windows with down hinged opening sections and automatic actuators by specialist

Dynamik engineered timber acoustic panels with perforations fitted to timber battens using Proprietary secret clipping system on black acoustic fleece over stud work. Provide 7mm spacing shadow gap between pattern. Panel layout to future details.

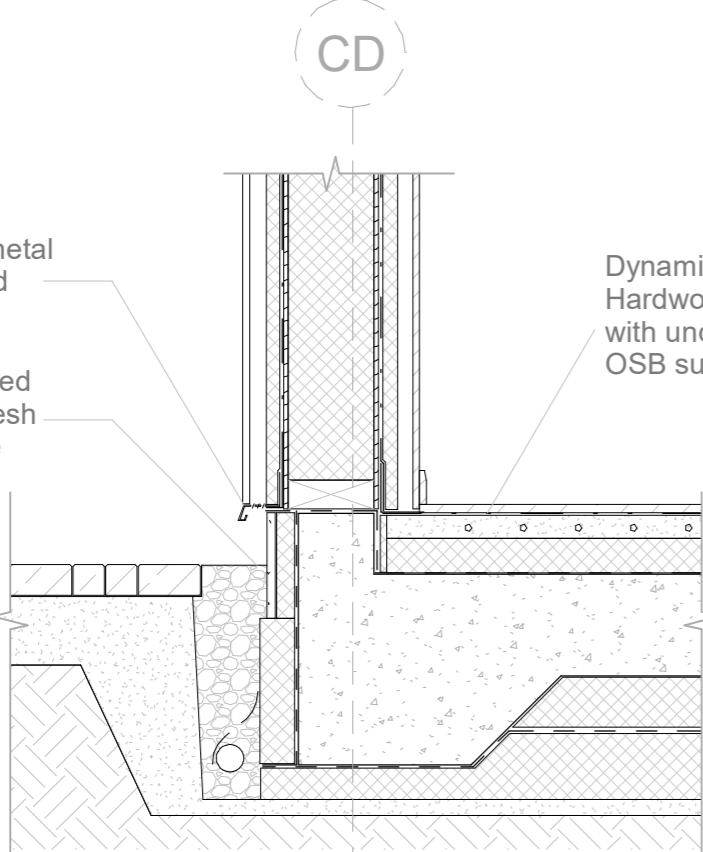


**04 South Wall Plan with Glazing 1 : 20**

InPek proprietary aluminum subframe fixed to 50mm Gutex wood fibre insulation board with Tyvek breather membrane to exterior face

SIP Energy loadbearing insulated wall panels with 15mm OSB/3 inner and outer layer and 230mm XPS insulation with 45 x 230mm treated timber sole plate all to manufacturer's details

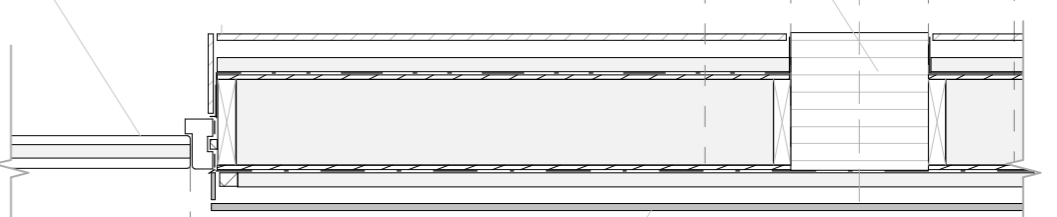
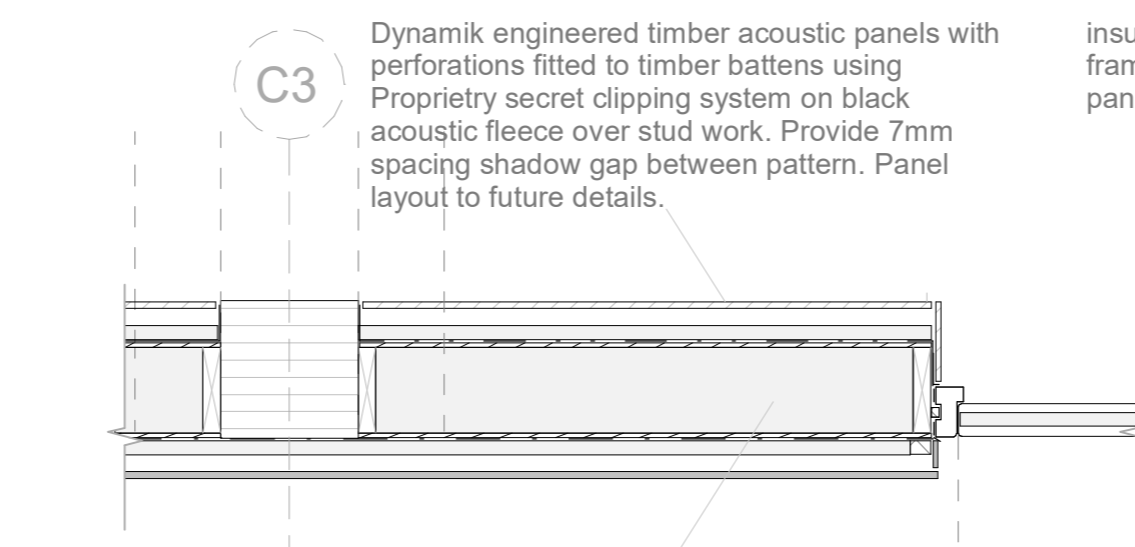
**03 South Wall Section 1 : 20**



Dynamik engineered timber acoustic panels with perforations fitted to timber battens using Proprietary secret clipping system on black acoustic fleece over stud work. Provide 7mm spacing shadow gap between pattern. Panel layout to future details.

insulated steel panel and framed fire exit with push bar panic bolt and self closers

400 x 400 Glulam structural column to structural engineer's details

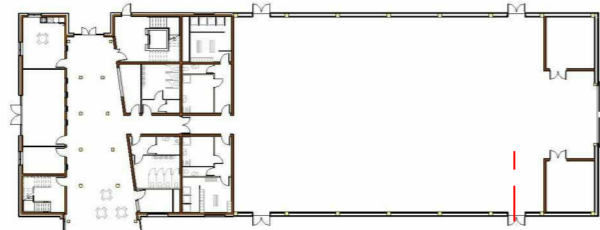


**05 South Wall Plan with Door 1 : 20**

SIP Energy loadbearing insulated wall panels with 15mm OSB/3 inner and outer layer and 230mm XPS insulation with 45 x 230mm treated timber sole plate all to manufacturer's details

Aquapanel Render System with finishing coat in selected colour on cement board. 50mm ventilated gap with 50mm Gutex mineral wall slab

South Elevation U-Value = 0.08 W/m<sup>2</sup>/K



Project  
**CLONGRIFFIN COMMUNITY CENTRE, MAIN STREET, CLONGRIFFIN, Co. DUBLIN**

Title  
**SOUTH ELEVATION HALL WALL SECTION**

Drawn by  
**Aidan McKenna**

Project number  
**DT175-3-TECH 3100**

Date  
**December 2020**

Checked by  
**Checker**



Submitted to  
**DT175 - 3**

Sheet no.  
**P005-TDS5-P5-A1-202**

Scale  
**1 : 20**