

# LOVE YOUR CAREER

TU Dublin Career Development Centre



PRESENTER : MARIE KIELTY

DATE Monday 8th February  
WORKSHOP TITLE:  
Postgraduate Study Ireland &  
Abroad

# Postgraduate Study-Ireland & Abroad

---

**Marie Kielty**  
**Career Coach**

February 2021



# Postgraduate Study – Considerations

---

- Fees
- Full-time / Part-time
- Dublin / Ireland / Abroad
- Taught / Research / Distance
- Conversion Courses



❑ <https://gradireland.com/publications>

❑ <http://viewer.zmags.com/publication/c44ce33c#/c44ce33c/14>





## Some tips for your postgraduate challenge

Deciding to further your learning with a postgraduate degree can be both rewarding and daunting in equal amounts, but once you start, it's important to get the most out of it. These days, you may be beginning your postgrad either remotely or with limited campus access. This is hardly ideal but there are still ways to prepare so you can get the most from your studies no matter how the course is delivered. Split your 'to-do' list into 2 sections; academic preparation and practical preparation. Seeing this division means being able to focus on key areas of improvement, and most importantly that you don't overwhelm yourself in the process.

### Academic preparation

#### Prepare yourself for the subject

In between your undergraduate and postgraduate studies, there is often a period of time that could be used to your advantage, such as the period of uncertainty caused by the pandemic. Find out what is happening with your course and when it will be starting, and that there are not delays. Then spend some time looking into the modules you will be taking, or the ones that you are hoping to take, and start familiarising yourself with some of the key components. If the module handbooks aren't available yet, as this is often the case when modules are tweaked each year, get in touch with the lecturers/course directors to find out more information and to get some added reading in.

#### Think about your dissertation

Even though it might seem like a far-off thought, it never hurts to start thinking about your dissertation, as they are part of almost all postgraduate courses. As your dissertation typically stretches over the entire length of your post-graduate degree, you have to find a topic that will strike the perfect balance between interest and quality. You will find it a lot easier to read about something you are interested in, especially for the best part of a year, and if that topic also gives you a lot to write about then even better. Giving yourself additional time to prepare readings or to analyse data is always a good thing, so use it to your advantage.

#### Be absolutely sure you want to study this topic

This could have been something you studied at undergraduate level, or something that has always fascinated you, but it is important to be absolutely certain you want to carry on with it. A Master's degree or PhD is a massive commitment, both financially and personally, so ensuring this path is the right one for you is vital.

You might also start your postgraduate studies and realise that this course is not for you, if that's the case you should speak to someone as soon as possible to consider other options and other courses. At universities and colleges there are sources of help available to you, for example the Student Wellbeing Team, who can talk you through any issues or doubts you are having.

### Practical preparation

#### Clean space = clean mind

Getting rid of any non-essential items in your workspace will definitely limit the amount of 'anxious-tidying,' also known as procrastination, you can get up to. The age-old saying "clean house, clean mind" really applies here, and you will find it far easier to get stuck into some research when you don't have to worry about piles of paper everywhere or empty glasses all over your desk. Plus, if you are going to be studying remotely for the first semester, or more, you really need to be able to have a space that you can focus in. Be creative. Is there an old shed that you can convert or an attic space? Not everyone will have such space but try and find a place where you can concentrate and make sure that those who live around know you need a space to study and focus.

#### Organise things to make your life easier:

There are several things you can get before embarking on your postgraduate course that will make the transition as seamless as possible. Even though it's quite basic, remember to stock up on all the stationery you will need and make sure you have a laptop and internet connection that's fit for purpose.

Organise a folder for each module ahead of time. When it comes to exams, revision notes will be right where you need them. If you haven't already, download some referencing software to help with your essays. Your careers services will be able to suggest some suitable options.

#### Get in touch with other

Having other people to talk to who are going through the same experience as you are something I really appreciated. Many of the courses have social media networks, where students and lecturers alike can communicate in a more informal platform. More generally, Twitter is an excellent resource for creating meaningful connections with other people in your field. There are many groups or users out there that can really assist your research, give you an idea of upcoming conferences, or just lend a supportive ear. As you will likely be investing a significant amount of your postgraduate course studying remotely, it is more important than ever that you take any opportunities to engage and communicate with others.



## Choosing a university for postgraduate study

What's most important when deciding where to do your postgraduate degree? It could be course content, location, costs, or the help available with funding.

**C**hoosing where to study is as vital a decision as selecting your course. To a certain extent, these decisions are interrelated. If you attend an institution where you are unhappy despite a great course – or if the institution is good fun but the course isn't what you want or need to do – you are unlikely to reach your full potential.

For your postgraduate studies to be successful, you need to choose a course that will help you achieve your goals at an institution where you feel comfortable and supported. Your choice of institution is likely to be driven by a combination of factors, such as the subject you wish to study, the institution's reputation, available funding or a desire to work with a particular academic. Another factor is the institution's location: going abroad to complete postgraduate study may suit some students while others may have to stay in a particular location because of work or family commitments. Having said that, institutions are increasingly offering courses via distance learning and blended learning, opening up opportunities for students who wouldn't necessarily have been able to access them before.

### Researching your options

Whether you choose to study in the Republic, Northern Ireland or elsewhere, it is important that you start your research as early as

possible. As well as checking out the institutions and courses on [gradireland.com/further-study](http://gradireland.com/further-study), an institution's website and prospectus are good places to start. It's also helpful to gain a personal feel for the place. If it isn't practical to visit the institution, make contact with current students and tutors via phone or email. Institutions may also be able to put you in touch with past students, who can tell you about their experiences and what they've done since. If you're currently pursuing undergraduate studies, it's worth discussing your plans with your lecturers. They're often part of an international academic network and so will be able to give you valuable information. Careers advisers can point you in the direction of funding sources. Careers services provide advice even after you have graduated and they can also offer some help to students from other institutions. Some of the factors you should investigate when researching your options include:

- course content, structure and timetable commitments
- campus location (in or out of town) and facilities (library, IT resources, accommodation for postgraduates, car parking/local transport)
- course and living costs
- exact course start date and duration
- potential sources of funding and any financial help you might need
- application processes (particularly important if considering applying abroad).

### Other factors to consider

Some students have other considerations to take into account when researching institutions. For example, students with young families may want to ask about crèche/childcare facilities. If you have a disability, it is arguably even more important to visit the institution (if possible) to check out the type of accessibility and support it provides. It's also worth contacting the institution's disability officer. The National Disability Authority website ([www.nda.ie](http://www.nda.ie)) has some useful information. In the UK, Disability Rights UK ([www.disabilityrightsuk.org](http://www.disabilityrightsuk.org)) has some useful fact sheets and information.

### Cross-border studying

If you choose to move from the Republic of Ireland to study in Northern Ireland or vice versa, you'll benefit from the courses being taught and structured in similar ways. However, there are some differences to be aware of. You may find that the cost of living differs. It's generally thought that it is more expensive in Northern Ireland than in the Republic, although accommodation may be cheaper. It's not unusual for students from the border regions to commute from home to their institution to economise. It's also a fact that there will likely be some impact on cross-border arrangements with the onset of 'Brexit' but the scale of this impact is still unknown. The Centre for Cross Border Studies has published a paper calling for flexible and imaginative solutions in this regard: [crossborder.ie/the-centre-for-cross-border-studies-publishes-brexit-briefing-paper-flexible-and-imaginative-solutions](http://crossborder.ie/the-centre-for-cross-border-studies-publishes-brexit-briefing-paper-flexible-and-imaginative-solutions)

## Changing direction: conversion courses

If you find that your career path may lie in a different direction to the path you studied for your undergraduate degree, don't panic. It's normal for some people to change path and there are a host of conversion courses out there to help you.

**I**t's always the best choice for any student to pursue something that they are passionate about. Nothing gets you successfully through the rigours of a four-year degree programme, where your own self-motivation is crucial, than your passion for its content. But, as you move into the final year of your degree, your own personal development over those years, as you grow into your early twenties, alongside the opportunities in areas that interest and excite you in the labour market, may lead you to consider a postgraduate degree programme either entirely or marginally unrelated to your undergraduate studies. This is a totally normal aspect of career development and should not in any way call into question the validity of your undergraduate course choice. Choosing to convert disciplines prior to seeking to enter the labour market is a perfectly rational decision.

### One-year taught courses

Conversion programmes are typically one-year taught courses and are available in most subject areas, with many in business subjects (such as human resources and marketing), arts and humanities, IT and finance.

Conversion courses can be taken as the first step towards a postgraduate degree or standalone qualifications and are highly valued by employers. If you feel you didn't reach your full potential at undergraduate level, a conversion course can offer a chance to redress the balance.

### Convert to IT

Given the high rate of graduate employment in the area, it's not surprising many graduates consider a conversion programme in information technology. Courses typically last for one year and offer a solid grounding in the theory and practice of computer science.

Many colleges offer cross-departmental programmes such as the Higher Diploma in applied science (applied computing technology) at University College Cork and the higher diploma in information technology at the National University of Ireland, Maynooth. Students who wish to move into IT in a particular subsector of the industry may wish to explore the UCD taught master's programme in computer science by negotiated learning.

This flexible programme helps students to customise their learning to their individual student needs and their prior learning experiences.

As well as data science, cloud computing, software engineering, forensics and security, artificial intelligence and cognitive science, students can choose a range of tailored modules to aid their specialisation such as app design, data mining, recommender systems or computer graphics.

A postgraduate conversion course in IT can fast-track you on to a master's, such as UCC's MSc in Interactive Media or an MSc Computer Science or Data Analytics at Technological University Dublin.

[www.pac.ie](http://www.pac.ie) is a central application centre for postgrad teaching programmes. It processes applications for the recently introduced two-year Professional Master's of Education (PME), which saw its first graduates enter the teaching force in September 2016.

To teach in Northern Ireland you need a Postgraduate Certificate in Education (PCCE). Graduates of many disciplines can do a teaching postgrad, but check your primary degree meets the entry requirements for your proposed teaching subjects (see [teachingcouncil.ie](http://teachingcouncil.ie)). DCU Institute of Education offers the Professional Master of Education, a conversion course for non-teaching graduates wishing to teach at primary or post-primary level.

### Convert to psychology

For graduate degrees and training in psychology, you need a first qualification in psychology which grants you graduate membership (GM) and the graduate basis for registration (GBR) in the relevant professional organisation.

GBR is a pre-requisite for entry to postgraduate training in applied areas of professional psychology.

## Publications

As well as the gradireland.com website, we produce a range of careers publications from directories to career sector guides. Brought to you by the Association of Higher Education Careers Services, in partnership with GTI Ireland, these are the official graduate careers products for the whole of Ireland, north and south.

If you are a student you can get copies free of charge from your careers service. Titles are also available to download by following the links below.



gradireland directory



Ireland's 100 leading graduate employers



gradireland Do Ghairm le Gaeilge and Your career with Irish

## Resources / Useful links

<https://www.tudublin.ie/for-students/career-development-centre/>

<https://www.tudublin.ie/for-students/career-development-centre/further-study/>

---

## Where to source Postgraduate Study options?

<https://gradireland.com/further-study>

<https://gradireland.com/further-study/advice-and-funding/funding/postgraduate-funding-is-there-any-still-out-there>

<https://www.postgrad.ie/>

<https://www.prospects.ac.uk/postgraduate-courses>

---





# PROSPECTS

Jobs and work experience

Postgraduate study

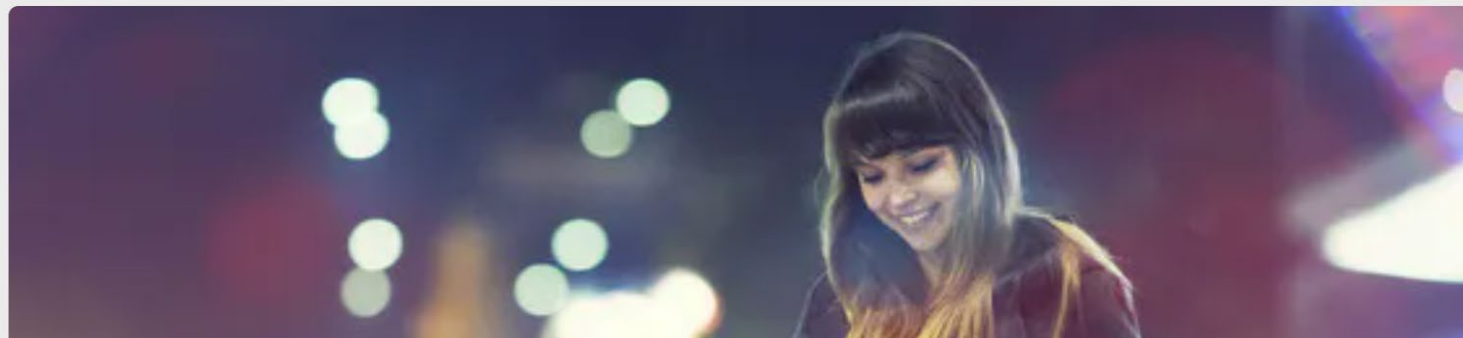
Careers advice

Applying for university

< Postgraduate study

## Study abroad

Taking your studies abroad will open you up to a whole range of new experiences, allowing you to see the world while furthering your education. Find out everything you'll need to know about student visas, course fees, study exchanges and more.





Study in Australia



Study in Austria



Study in Belgium



Study in Brazil



Study in Canada



[Home](#) » [Postgraduate Programmes](#)

## Postgraduate Programmes

In addition to undergraduate programmes, there are several thousand Masters programmes taught through English in Continental Europe, in some of the very top Research Universities. Most of these programmes are available at the same fee levels as those charged for undergraduate programmes in the relevant country [e.g. free in Denmark and Sweden and Eur 2143, with interest-free Tuition Fee Loan, in the Netherlands]

If you register with EUNICAS, we offer you a full personalised search service, for Masters programmes relevant to you. After you register, please email your registration acknowledgement to [support@eunicas.com](mailto:support@eunicas.com) [with 'Postgraduate' as subject of email] together with:

- your preferred study discipline
- your undergraduate degree [subject and grade]
- your preferred budget for tuition fees

We will come back to you, within 48 hours, with a list of recommendations, and will advise you thereafter on how to apply.

<https://www.eunicas.ie/index.php/studying-abroad/postgraduate-programmes.html>

## Studying Abroad

[National Education Systems](#)

[Countries & Cities](#)

[What Employers Say](#)

[Postgraduate Programmes](#)

[Cost of Studying in Europe](#)

[Studying Outside Europe](#)

[Search Courses](#)

[Browse by Country](#)

[Browse by Discipline](#)

Keyword



[Important Dates](#)

[Webinars](#)

[Featured Courses](#)

**1 Oct 20** Applications open in **the Netherlands**

**16 Oct 20** Applications open in **Sweden**

**07 Jan 21** Applications open in **Finland**



## Personal Statements

<https://www.prospects.ac.uk/postgraduate-study/masters-degrees/personal-statements-for-postgraduate-applications>

## Application deadlines

<https://gradireland.com/further-study/advice-and-funding/applications/entry-requirements-and-for-postgraduate-courses>

## Scholarships/ Funding

<https://gradireland.com/further-study/advice-and-funding/funding/funding-for-postgraduate-study-in-northern-ireland>

<https://susi.ie/postgraduate-student/>

[https://www.bordbia.ie/about/talentacademy/?gclid=Cj0KCQiAlsVBRDtARIsAHMGVSZQLCcRFC8eKPYimJEsy9VZy7\\_f3SrYPVtfV9SXtPAduPfHd2b0UEYaAqejEALw\\_wcB&gclidsrc=aw.ds](https://www.bordbia.ie/about/talentacademy/?gclid=Cj0KCQiAlsVBRDtARIsAHMGVSZQLCcRFC8eKPYimJEsy9VZy7_f3SrYPVtfV9SXtPAduPfHd2b0UEYaAqejEALw_wcB&gclidsrc=aw.ds)

# THANK YOU!

---

Any questions

