

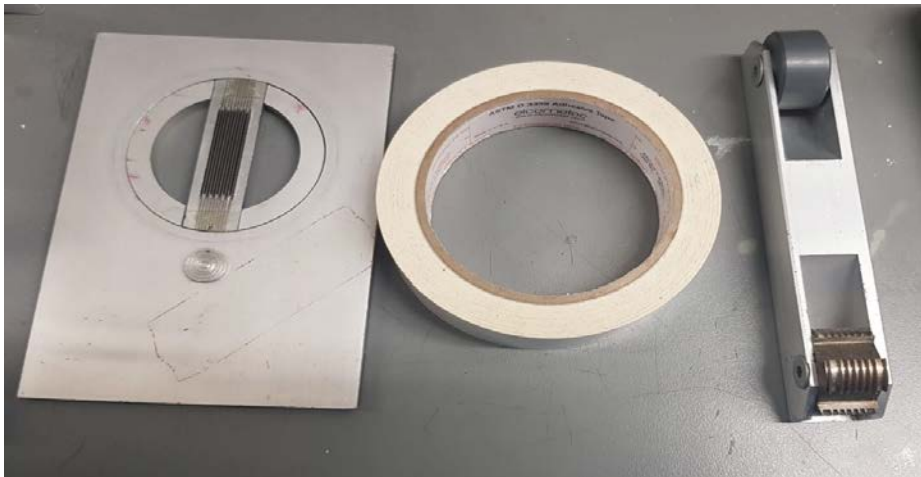
### Cross Hatch Adhesion

#### Principle:

Cross hatch adhesion is a technique to determine the strength of a surface coating that has been bonded to its substrate. This test is a visual comparison test therefore provides instant results.

#### Current Model/Procedure:

- A series of cross hatches are made on a coated surface.
- A standardised tape is then placed over the cross hatched section
- The tape is then peeled off slowly.
- The tape is checked to see if any of the material has been deposited on it.



Youtube: <https://www.youtube.com/watch?v=QBtIC6ZBkGc>

#### Typical Samples:

Any coated material can be tested using this procedure

#### Standards:

The coating adhesion is assessed against international standards ISO 2409 and ASTM D 3359 or customer requirements.

**Contact:** Dr Brendan Duffy, [brendan.duffy@tudublin.ie](mailto:brendan.duffy@tudublin.ie), +353-1-220-6907